



Auckland to Christchurch Wonders of New Zealand

Explore Auckland, the City of Sails, before venturing south to Waitomo and the world-famous glow worm caves. From here travel to Rotorua, enjoying adventure activities and Maori culture. Leaving the North Island, you will pass the capital of New Zealand, Wellington, renowned for its great craft beer, wind and the "beehive" government building. Once across the Cook Strait, you'll pass the rich wildlife of the Kaikoura coastline, the Canterbury Plains, southern lakes and glacial areas. There are plenty of adventures on your journey, and highlights might include a helicopter ride over the glacier, the TranzAlpine train or even a swim with the world's smallest wild dolphins.

Starts in: Auckland
Finishes in: Christchurch
Length: 19days / 18nights
Accommodation: Motels
Can be customised: Yes

This itinerary can be customised to suit you perfectly. We can add more days, remove days, change accommodations, mix it up, add activities to suit your interests or simply design and create something from scratch. Call us today to get your custom New Zealand itinerary underway.



Inclusions:

Includes: Late model rental cars

Includes: Unlimited kms

Included activity: Private Transfer Auckland Airport to your Auckland Accommodation with Tourcorp

Included activity: The Visitor Promise - Cultural Learning Course

Included activity: Swimming with Dolphins Cruise with Black Cat

Included activity: Twin Glacier Scenic Helicopter Flight with The Helicopter Line

Included activity: Shared Transfer from Christchurch Train Station to Christchurch CBD Accommodation with Christchurch Touring Company

Included activity: Glow Worm Caves Tour with Discover Waitomo

Included activity: Te Pā Tū Evening Māori Cultural Experience - Dinner Included

Included activity: Interislander Ferry Wellington to Picton

Includes: Fully inclusive rental car insurance (excess may apply)

Includes: Afterhours emergency support while touring

Included activity: Electronic Travel Guide and In-Country Support App

Included activity: Ocean's Cabin with Whale Watch Kaikōura

Included activity: Glacier Explorers

Included activity: TranzAlpine Scenic Train: Greymouth to Christchurch

Included activity: Private Transfer from Accommodation to Airport with Christchurch Touring Company

Included activity: Wai-O-Tapu Thermal Wonderland

Included activity: Lord Of The Rings Half Day Private Tour with Capital Personalised Tour

: 1 special dinner

Day 1



Private Transfer Auckland Airport to your Auckland Accommodation with Tourcorp

You will be met at the Auckland airport by the driver and transferred to your Auckland accommodation.

Welcome to Auckland

Welcome to Auckland, known in Māori as Tāmaki Makaurau. Auckland is New Zealand's vibrant "City of Sails," and the country's largest metropolitan area. Nestled between the Pacific Ocean and the Tasman Sea. Surrounded by native bush, lush rainforests, and pristine beaches, Auckland is a haven for both adventurers and urban explorers. Wander through world-class museums and galleries in the city centre or enjoy a peaceful retreat at the Auckland Gardens, where stunning landscapes showcase New Zealand's diverse flora. Stroll along the lively waterfront to savour fresh seafood and international cuisine at Viaduct restaurants. For an unforgettable perspective, ascend the iconic SkyTower, New Zealand's tallest structure, and take in panoramic views of the city and its picturesque islands.

Your accommodation: Oaks Auckland Hotel

Oaks Auckland Hotel offers a comfortable self-contained apartment in downtown Auckland. Located a short walk from Britomart Transport and the Viaduct. Enjoy your stay in central Auckland surrounded by delicious eateries or use your in-house kitchenette to dine in!



Day 2



Collect Rental Car

This tour's from price includes an intermediate-sized vehicle, setting you up for comfortable travels. Yet, we understand every adventure is unique! Feel free to select the perfect wheels from our incredible collection of rental cars, spanning from economy hatchbacks to premium SUVs.

Car Instructions

On collection of your rental car, you will be required to sign a rental agreement and provide a credit card for a security bond authorisation. Remember, the bond is only authorised, not charged, at this stage. While your rental rate may include coverage for mechanical breakdowns (please verify your specific car inclusions), you may also have the option to purchase roadside assistance for non-mechanical issues. All drivers must present a physical credit card, valid driving license and passport to be added to the agreement, with potential additional charges for extra drivers. Debit cards may be used on select vehicles. If you are presenting an international drivers license, this must be accompanied by the original domestic license. Drivers under 21 are not permitted, and those aged 21-24 may face a surcharge, both payable directly to the rental company. For detailed information, please refer to your rental car inclusions. See this important information if you are traveling between the North and South Islands on the ferry

Explore Auckland

Perched on the edge of a large natural harbour, New Zealand's 'City of Sails' offers the best of both worlds. Sandy beaches, native bush and lush rainforests give way to a vibrant urban culture. Spend time in the Viaduct Harbour, try your hand at sailing an America's Cup Yacht or take the ferry to nearby Waiheke Island for a gourmet food and wine experience. Venture to the top of Auckland's highest volcano, Mt Eden, for soaring views of the Hauraki Gulf or hop on the short ferry to Rangitoto Island and hike to the top of the volcanic island. Immerse yourself in nature at the expansive Auckland Botanic Gardens, sprawled across 156 acres of native forest, pack a picnic, soak up the sunshine, and enjoy the birdsong. Head up to the Sky Tower, standing over 300m tall, and have a meal in the 360-degree revolving restaurant. Scale the outermost perimeter of the Harbour Bridge or test your stomach with a bungee jump, then end your day on Ponsonby Road sampling upmarket culinary delights.

SUGGESTED ACTIVITY - Ferry from Auckland to Rangitoto Island and return with Fullers

A short cruise through the Waitemata Harbour to the Hauraki Gulf delivers you to Rangitoto Island. Rangitoto Island is the largest and youngest of the many volcanoes that make up the Auckland volcanic field. It erupted around 600 years ago, but is extinct now and safe to explore. During your cruise to and from the island enjoy fantastic views of Rangitoto Island and Auckland. On reaching the island you can walk to the summit (1 hour direct) for great views of the Hauraki Gulf and over Waitemata Harbour looking back towards Auckland. There are a number of walking trails to explore this volcanic island, further information can be found at the Department of Conservation website.

SUGGESTED ACTIVITY - Harbour Sailing Cruise with Explore

Enjoy the City of Sails from the water on a relaxed harbour sailing yacht. This cruise offers a uniquely local experience experiencing the harbour under sail with a small vessel with an intimate and engaging atmosphere. View the stunning city sights while sailing on the inner Waitemata Harbour. Sail where the wind takes us while enjoying Auckland's city highlights; including sailing under the Harbour Bridge and other well-known landmarks along the harbour's edge. The crew's local knowledge will give you the best harbour sailing experience Auckland has to offer. Become the crew and help participate with the sailing experience take the helm while you carve through the water, or if you prefer just sit back and relax above deck.

Your accommodation: Oaks Auckland Hotel

Oaks Auckland Hotel offers a comfortable self-contained apartment in downtown Auckland. Located a short walk from Britomart Transport and the Viaduct. Enjoy your stay in central Auckland surround by delicious eateries or use your in-house kitchenette to dine in!



Day 3



Auckland to Waitomo

The drive south from Auckland takes you into the rolling farmland and rich dairy pastures of the Waikato, before arriving in the limestone hills of the Waitomo countryside, which is home to a huge underground network of caves.

Waitomo

Waitomo is a small, picturesque village located in the Waikato region of New Zealand's North Island, renowned globally for its spectacular underground limestone caves and the mesmerising glowworms that illuminate them. This natural wonderland attracts visitors from around the world, offering a unique blend of adventure, natural beauty, and Maori culture. The Waitomo Caves are the centerpiece of the area, with three main caves that are open to the public: the Waitomo Glowworm Caves, Ruakuri Cave, and Aranui Cave. The Glowworm Caves are perhaps the most famous, offering a magical boat ride through a subterranean grotto lit by thousands of tiny glowworms, creating a starry night effect underground. Ruakuri Cave offers a more adventurous experience, with its spiral entrance, underground rivers, and fascinating rock formations, while Aranui Cave is known for its stunning stalactites and stalagmites. For thrill-seekers, Waitomo offers a variety of exhilarating activities, including black-water rafting, where you can float through the caves on an inner tube, and abseiling or zip-lining into the depths of the caves. The surrounding karst landscape also provides opportunities for above-ground exploration, with scenic walking trails that reveal the region's lush forests, limestone cliffs, and hidden waterfalls. Waitomo's connection to Māori culture adds another layer of depth to the visitor experience. Many of the cave tours include insights into the Māori legends and stories associated with the area, offering a deeper understanding of the cultural significance of the caves. The village of Waitomo itself is small but welcoming, with a selection of cafes, restaurants, and accommodations ranging from backpacker hostels to luxury lodges. The nearby Otorohanga Kiwi House & Native Bird Park offers a chance to see New Zealand's native wildlife, including the iconic kiwi bird, further enriching your visit to the region.

Glow Worm Caves Tour with Discover Waitomo

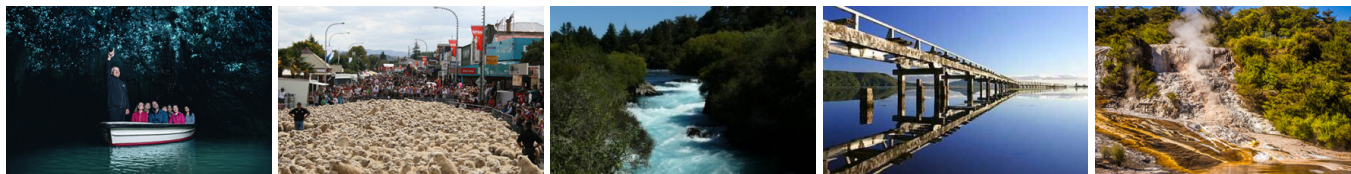
Explore a 30 million year old cave network spread across three levels. You'll travel deep underground through the limestone caves viewing stalactites and stalagmites as well as hearing about the caves historical and geological significance. You'll then hop into a boat and glide silently through the glow worm grotto - a galaxy of tiny living lights.

Your accommodation: Palm Court Motel Otorohanga

Palm Court Motel is conveniently located 200 metres from cafes, restaurants, village shopping and the railway station. Stay just a few minutes drive to Waitomo Caves, Black-Water Rafting, Adventure Tours, Kiwi House and the golf course.



Day 4



Waitomo to Rotorua via Taupo

Tongariro National Park is also a World Heritage Site. 3 active volcanoes form the backbone of this spectacular region. Hiking, fishing, climbing, mountain biking, scenic flights or simply taking a drive to the top of the ski field road at Whakapapa are some of the most popular ways to enjoy the region. Descending into the trout fishing capital of New Zealand the township of Turangi sits on the southern shores of Lake Taupo. Next the township of Taupo which sits on the edge of New Zealand's largest lake, Lake Taupo - a gigantic volcanic caldera formed during one of the world's largest ever eruptions. Just north of the town are the Huka Falls and a short detour to view is advised. The Huka Jet can get you much closer with a thrilling jet boat ride. Nearby Craters of the Moon is a geothermal reserve with great walking tracks around its many boiling pools and steaming vents. Continuing on to Rotorua you pass the volcanic valley, visit either Wai O Tapu or the Waimangu Valley for a closer look. Arriving into Rotorua the city's geothermal activity is evident with steam rising from the roadside and hills. Rotorua is considered the heart of New Zealand's Maori cultural and here you can learn of their history and traditions. The Rotorua Museum is outstanding and one of its main displays is about the devastating eruption of Mt. Tarawera in 1886. Nearby Ohinemutu Village is located on the site of the first Maori settlement in the area. One of the most popular introductions for many to the Maori culture is through an evening at Mitai Maori Village. Here you will gain an insight into the traditional Maori way of life through song, dance and entertainment. A dinner prepared in the traditional manner is served to finish the evening off.

SUGGESTED ACTIVITY - Huka Falls Jet Boat Ride

The Huka Jet is 30 minutes of pure fun and exhilaration, skimming close to cliffs, sliding past trees, feeling the adrenalin of full 360 degree spins. The excitement continues right up to the base of the foaming Huka Falls, where you get a spectacular water level view to New Zealand's most visited natural attraction. Nothing compares to watching 220,000 litres per second tumbling over the cliff face towards you. The water from the mighty Huka Falls runs down the Waikato River through a series of Hydro Power Stations. You'll get a view of the Wairakei Geothermal Power Station in the comfort of a powerful Chevrolet V8 jet boat. This unique Geothermal Power Station uses underground geothermal activity to produce hot steamy water. The Waikato Rivers beautiful environment is varied and unique and is New Zealand's longest river flowing north from our largest lake, Lake Taupō. It is important you read and understand the risks associated with this activity. For more information please see here.

Rotorua

Discover the geothermal, adventure, and cultural wonderland of Rotorua. As you explore, you may see steam rising from cracks in the road, bubbling and hissing water in pools along the lake's edge, and the unmistakable smell of Sulfur. Rotorua is rich in Māori culture and history, with many Māori inhabitants recognising the great potential of the volcanic land. For an outdoor adventure, head to The Redwoods and experience the rainforest treetops from high up. There are a few accessible trails for disabled hikers and great biking trails as well. If you're lucky, you might spot some of New Zealand's native birds, such as the Pīwakawaka (Fantail) and the Tūī. Alternatively, enjoy the Lake Tikitapu Blue Lake Walk or explore Kuirau Park, where you'll find bubbling mud pools and steaming lakes. Don't miss the private thermal reserves such as Te Puia and Wai-O-Tapu, where you can walk among bubbling mud pools, spouting geysers, and Sulfur ponds. Just a few minutes from the town centre, the Agrodome and National Kiwi Hatchery offer an insight into nature. Rotorua's rich Māori culture is a must-see. Spend an evening with Te Pā Tū, complete with a traditional-style dinner or stroll along the lake edge to reach one of the country's oldest Māori villages at Ohinemutu. When hunger strikes, visit Eat Street in Rotorua CBD, a vibrant street lined with delicious eateries and restaurants to satisfy any craving. No visit to Rotorua would be complete without experiencing Rotorua's original tourist attraction - a relaxing spa treatment. This town boasts an array of wellness experiences to unwind in. Whether you are seeking adventure, culture, or relaxation, Rotorua offers an unforgettable experience.

Your accommodation: Silver Fern Suites & Spa

Silver Fern Suites & Spa is located just minutes from Rotorua's city centre and is close to popular thermal attractions, cafes, restaurants and golf courses. Suites have a private spa pool or double spa bath for you to unwind and relax.



Day 5



Wai-O-Tapu Thermal Wonderland

Wai-O-Tapu Thermal Wonderland is a spectacular showcase of New Zealand's colourful and unique geothermal elements sculpted by thousands of years of volcanic activity. You will be introduced to a diversely different natural landscape, extending over 18-sq. km. Enjoy viewing the volcanic features as you walk at your own pace along well-defined tracks. Relax in the first-class Visitor Centre, home to the Gift Shop and Caf'e facilities. Visit the Mud Pool, the largest in New Zealand, it was originally the site of a large mud volcano which was destroyed through erosion in the 1920s. See the history and beauty of the Lady Knox Geyser at 10:15 am every day where a daily eruption happens of up to 20 metres.

Te Pā Tū Evening Māori Cultural Experience - Dinner Included

New Zealand's Most Awarded Cultural Attraction, presenting Te Pā Tū. Feast on song, drama, tradition, and divine seasonal kai (cuisine) within the forest Pā (village) blanketed by towering Tawa trees, blazing bonfires, and a forest-formed amphitheatre. Te Pā Tū shares Māori history, traditions, and cultural aspirations across 4-hours of celebration and feasting. These events change with each season of the Maramataka, the Māori lunar calendar.

Your accommodation: Silver Fern Suites & Spa

Silver Fern Suites & Spa is located just minutes from Rotorua's city centre and is close to popular thermal attractions, cafes, restaurants and golf courses. Suites have a private spa pool or double spa bath for you to unwind and relax.

Meals included: Speciality Dinner



Day 6



Explore Rotorua

Peppered with natural hot springs, boiling mud pools and steaming geysers, Rotorua sits within one of the world's most active volcanic regions. Geothermal landmarks aside, this city of sulphur has a rich indigenous history. Home to several prominent Māori tribes, a visit to one of the Māori experiences should be high on your agenda, learn about the special meaning of pounamu-Greenstone with Mountain Jade, explore the geysers and arts of Te Puia or immerse in an evening with Te Pā Tū. An excursion to one of the area's wellness spas is also a must! Try the Polynesian Spa for an invigorating soak in its natural mineral hot springs, Wai Ariki offers an indulging and unwinding restorative journey or pay a quick visit to Secret Spot for a soak and a delicious smash burger! If it is a thrill you are looking for, spike your adrenaline at Rotorua Canopy Tours, soaring above the ancient native forest below. Alternatively, head up the Skyline Rotorua Gondola for soaring lake views, and ride the luge at night for an extra thrill. Make the most of your time in Rotorua with an excursion through the Wai-O-Tapu Thermal Wonderland, one of the area's most colourful volcanic attractions. Whatever you are after, Rotorua is almost certain to have it!

SUGGESTED ACTIVITY - National Kiwi Hatchery Experience

The National Kiwi Hatchery Experience is a special opportunity to gain insight into and view this highly regarded conservation centre. Developed with the visitor experience in mind, the hatchery boasts special viewing opportunities and is hosted by kiwi expert guides who ensure guests leave fully informed and all questions answered. Learn all about New Zealand's intriguing national icon and the efforts of the kiwi husbandry team, see and discover what it takes to hatch and rare chicks, and if you're lucky see baby chicks in person!

SUGGESTED ACTIVITY - Original Ziplining Experience with Rotorua Canopy Tours

Embark on a three-hour adventure through the native New Zealand forest. Journey through the beautiful forest canopy via an incredible network of trails, tree platforms, Ziplines and swing bridges. See breathtaking views of the woodland valleys and hills as you fly through tight openings in the trees. In between the thrill of the ziplines and suspended tree bridges, your guides will share their passion and knowledge for the forest and the conservation challenges to preserve it. It is important you read and understand the risks associated with this activity. For more information see [here](#).

Your accommodation: Silver Fern Suites & Spa

Silver Fern Suites & Spa is located just minutes from Rotorua's city centre and is close to popular thermal attractions, cafes, restaurants and golf courses. Suites have a private spa pool or double spa bath for you to unwind and relax.



Day 7



Rotorua to Wellington

The drive from Rotorua to Wellington takes you via the township of Taupō home to New Zealand's largest lake. Following the lakeshore South you'll pass Turangi and then ascend the central plateau onto the high country Rangipo Desert. Skirting the edge of Tongariro National Park, you'll reach the military town of Waiouru before descending through rich farmland and the rural towns of Taihape And Mangaweka. Follow the coast through Paraparaumu, Paekakariki and Plimmerton to arrive at your destination, Wellington.

Wellington

Wellington known in Māori as Te Whanganui-a-Tara is home to New Zealand's centre of government. Often referred to as 'mini Melbourne', this windy city is a melting pot of art, culture, food, and fashion. Quirky laneway bars, underground art shows, and hipster eateries make up its inner-city vibe, while a host of sandy beaches outside the urban bustle bring a cheerful holiday feel. Head to Te Papa Museum for a history lesson and a ticket to one of its many international exhibitions or jump aboard the Wellington Cable Car - the only running funicular railway in the country. For those with an eye for boutique, fashion wander through Cuba St to sample some of the city's best vintage stores. Break for coffee at a hipster cafe and be sure to snap a pic outside the 'Beehive', New Zealand's parliamentary debate chamber. Go behind the scenes at Weta Workshop Experience, the Oscar Award Winning design studio behind Lord Of The Rings, The Hobbit, and Avatar. If you're a foodie at heart, a two-hour round trip to Martinborough is a must-do. Take your time as you wind through spectacular wine country. For an educational day out, learn about New Zealand's native species at Zealandia, the world's first fully-fenced eco-sanctuary and home to over 40 types of endangered and native birds.

Your accommodation: Adina CityLife Wellington

Adina CityLife Wellington is a suite style hotel with every amenity required for a comfortable stay, as well as being in a superb location to explore the compact city centre. Situated on Lambton Quay, you'll find the best shopping, tourist attractions and cultural landmarks all within easy walking distance.



Day 8



Lord Of The Rings Half Day Private Tour with Capital Personalised Tour

Prepare for an unforgettable LOTR adventure. Leaving Wellington, you will first head for the hills, admiring views from Mt Victoria before visiting Hobbit's Hideaway in the 'Outer Shire'. Next, immerse yourself at the Weta Cave in Miramar. Tour the museum, shop, and capture photos with iconic movie props. Experience the fascinating 'Weta Workshop Experience', going behind-the-scenes to see props and weaponry, with artists describing their creations. After a magical cinematic journey, you will return to Wellington.

Explore Wellington museums

Discover Wellington's vibrant museum scene, where history, art, and culture collide. Te Papa Tongarewa, New Zealand's national museum, offers immersive exhibits exploring the nation's art, culture, and natural history. The Wellington Museum shares the fascinating stories of the Wellington region. For art lovers, City Gallery Wellington showcases cutting-edge contemporary works from local and international artists. Perfect for all ages, Wellington's museums blend education and inspiration, making them a must-visit in the capital.

SUGGESTED ACTIVITY - Zealandia By Night Wildlife Sanctuary Tour

Taking a night tour of Zealandia wildlife eco-sanctuary is an unforgettable experience and one that comes highly recommended. A conservation success and safe haven for some of New Zealand's rarest native animals, Zealandia is home to many remarkable species of birds, reptiles and insects living wild within a beautiful 225 hectare (one square mile) valley, just 10 minutes from the central city.

Your accommodation: Adina CityLife Wellington

Adina CityLife Wellington is a suite style hotel with every amenity required for a comfortable stay, as well as being in a superb location to explore the compact city centre. Situated on Lambton Quay, you'll find the best shopping, tourist attractions and cultural landmarks all within easy walking distance.



Day 9



Interislander Ferry Wellington to Picton

The 92 km journey between Wellington and Picton takes around 3 hours and has been described as 'one of the most beautiful ferry rides in the world'. Leaving Wellington Harbour the ferry passes many interesting points such as Pencarrow Head on top of which is New Zealand's oldest lighthouse (1859). Red Rocks is home to a seal colony and Oterangi Bay is the site which recorded the country's highest ever wind speed of 268 kph (167 mph).

From the Cook Strait spectacular views of the Kaikōura Ranges on the South Island can be enjoyed and dolphins and many sea birds are often seen. Around one hour of the cruise takes you through the Marlborough Sounds and this region of bush covered mountains, small islands, crystal clear waters and secluded bays offer remarkable photographic opportunities. The final leg of the cruise travels through Queen Charlotte Sound before coming to an end in the picturesque town of Picton.

Collect Rental Car

This tour's from price includes an intermediate-sized vehicle, setting you up for comfortable travels. Yet, we understand every adventure is unique! Feel free to select the perfect wheels from our incredible collection of rental cars, spanning from economy hatchbacks to premium SUVs.

Picton to Blenheim

It is a short 30 minute drive, as you'll follow the valley south to arrive in Blenheim, located in the heart of Marlborough - New Zealand's largest wine producing region. Go through acres of leafy green vines and marvel at the magnificent 'dry hills' of Marlborough in the distance.

SUGGESTED ACTIVITY - Half Day Marlborough Wine Tour with Sounds Connection

An afternoon among the vines! Be immersed in the Marlborough wine country with the Sounds Connection half day wine tour. Get collected from your accommodation and taken through three or four hand-picked wineries to taste the award-winning produce this region is known for. Hear about the history of winemaking in Marlborough as well as learning the unique processes each winery goes through.

Your accommodation: Blenheim Palms Motel

Located 100 m from the central shops and eateries, the Blenheim Palms Motel offers tasteful individually designed apartment-styled rooms.



Day 10



Blenheim to Kaikōura

Cross Marlborough and head towards one of the most spectacular coastlines of the South Island, the Kaikōura Coast. The road hugs the shore for around 50 kms and offers many chances to view native wildlife. To the east is the South Pacific Ocean and to the west the towering Kaikōura Ranges. Kaikōura Township is a bustling little place with many cafes, restaurants and shops, but the main reason for visiting here is the wildlife and it's one of the only places in New Zealand you can see whales year round.

Kaikōura

Kaikōura is a stunning coastal town known for its rich marine life and dramatic scenery. Visit the fur seal colony, take a whale-watching cruise, or swim with playful dusky dolphins. The town is rich with attractions, walking tracks, and activities for every visitor. A walk around the Kaikōura Peninsula is a must, where you can explore tide pools teeming with marine life, observe sea creatures basking on the rocks, and, for bird lovers, spot the impressive native albatross. Just be sure to keep a respectful distance from any sea lions you meet. Highlights like Ohau Point and historic Fyffe House offer insight into the region's wildlife and whaling past. Finish your visit by sampling the fresh local seafood, renowned for having some of the best fish and chips in the country, or by taking a relaxing wander through the tranquil Lavendyl Lavender Farm.

Your accommodation: The White Morph, Kaikōura

Set on the Esplanade in Kaikōura, The White Morph enjoys commanding views of the ocean and mountains. Just a 10-minute walk into town, The White Morph has been beautifully placed so that you can take in the spectacular scenery of Kaikōura while enjoying the variety of attractions on offer.



Day 11



Ocean's Cabin with Whale Watch Kaikōura

Experience New Zealand's only marine-based whale-watching company. Whale Watch Kaikōura offers a once-in-a-lifetime, up-close encounter with the giant Sperm Whale. You are also likely to encounter New Zealand fur seals, dolphins, and albatross. Depending on the season you may also see Pilot, Blue, and Southern Right whales as well as migrating humpbacks. Often orcas can be spotted here and the world's smallest dolphin, the Hector's, occasionally makes an appearance.

Kaikōura to Christchurch

Travel down the coast before heading inland through the North Canterbury wine region - the Waipara Valley. If you've time on your hands we recommend taking a detour to Hanmer Springs for relaxing dip in its thermal pools. Arriving into Christchurch you'll see a new and improved city, steadily rising from the ruins of the 2011 and 2010 earthquakes.

Christchurch

Christchurch known in Māori as Ōtautahi, is the largest metro area in the South Island. Commonly referred to as New Zealand's "Garden City", Christchurch is home to one of the biggest public parks in the country, and beautiful botanic gardens. The city was hit with devastating earthquakes in 2010 and 2011, now the city crosses the line between its English heritage and a new modern architecture. To take in some arts and culture, pay a visit to the Canterbury Museum or the Christchurch Art Gallery. Take a step back in time with a tram around the city or punt along the Avon River. If tasting your way around the city is your means of travel, try out a cultural eating tour. A short drive from the CBD will lead you to the outskirts of the Banks Peninsula beachside suburb of Sumner or through the tunnel to Lyttelton Harbour which hosts fantastic markets on Saturday mornings.

Your accommodation: Quest on Cambridge

Quest on Cambridge serviced apartment-style hotel rooms offer guests a relaxed and comfortable Christchurch accommodation experience. Each room has an open-plan living area, a fully equipped kitchen, and natural light. Quest on Cambridge is a short walk from the south shopping centre and to the Botanic Gardens.



Day 12



Akaroa and The Banks Peninsula

Akaroa and the Banks Peninsula offer a striking contrast to Christchurch, with rolling green hills, golden beaches, historic settlements, wineries, cafés, and abundant wildlife just 1.5 hours from the city. Over the Port Hills lies Lyttelton, a historic port town whose harbour names reflect its naval past. The peninsula itself is the remains of an ancient volcano that now forms Akaroa Harbour, where French settlers arrived in 1840, an influence still seen in the town's French street names and annual festival. The Harbour itself is teeming with wildlife and a nature cruise is a must do activity. One of the world's smallest and rarest dolphins, Hector's dolphin, are often seen and cruises also offer excursions with the chance to swim amongst them.

Swimming with Dolphins Cruise with Black Cat

Akaroa Harbour formed as a result of an extinct volcanic crater being flooded by the Pacific Ocean. It's a beautiful place with sheer cliffs and the picturesque township of Akaroa at its heart. New Zealand's only native dolphin, Hector's dolphin, makes this sheltered harbor its home, and it's here you can see them and if you wish actually swim with these incredible creatures. Following a 12-hour briefing, you depart on your cruise of which around 1 hour is spent in the water with the dolphins. Black Cat Cruises has been operating since 1985 and their success rate at sighting dolphins is over 98%. Swimming with dolphins is not always possible either due to sea conditions, the dolphins' willingness to stay and play, and other environmental reasons such as not swimming when there are babies around. They still manage to swim through on over 80% of their tours. All equipment is provided and all you need to bring along is your swimming costume and a towel.

Please note: To participate in the swim encounter, you must be a confident enough open-water swimmer with a good basic level of fitness, as you will need to swim up to 50 metres unaided and tread water in depths of 15–30 metres. Please be aware that these encounters take place in open-sea conditions where life jackets cannot be worn while in the water.

Your accommodation: Quest on Cambridge

Quest on Cambridge serviced apartment-style hotel rooms offer guests a relaxed and comfortable Christchurch accommodation experience. Each room has an open-plan living area, a fully equipped kitchen, and natural light. Quest on Cambridge is a short walk from the south shopping centre and to the Botanic Gardens.



Day 13



Christchurch to Aoraki-Mt Cook National Park

Drive through the heart of the South Island, crossing the vast Canterbury plains. Catch your breath in Geraldine before continuing through Fairlie. Ascending Burkes pass you'll come to the picturesque town of Lake Tekapo. Follow the road and take in the view of Aoraki-Mt Cook (New Zealand's tallest mountain) from the shores of Lake Pukaki, known for its glacier fed turquoise blue colour. Continue along the lake to your final destination Aoraki-Mt Cook Village.

Aoraki-Mt Cook National Park

At 3754m Aoraki-Mt Cook is Aotearoa-New Zealand's highest mountain, located deep in the heart of the Southern Alps. As well as its impressive beauty, Aoraki-Mt Cook National Park is also home to a huge range of awe-inspiring sights and activities. Take to the air with Mt Cook Ski Planes for a scenic flight that includes a glacier landing. At around 27 kilometres long the Tasman Glacier is New Zealand's longest and a Glacier Explorers tour allows you to see its unique features up close.

There are many short hikes in and around the park and these are well signposted around the village. Those with an interest in the night sky should take a Big Sky Stargazing tour with the Hermitage Hotel. The region is considered to have one of the clearest night skies in the world and is one of the few gold-rated dark sky reserves worldwide.

Visit the Sir Edmund Hillary Alpine Centre for insight into this region's mountain climbing history. You'll also learn of Sir Ed's incredible achievements and his dedication to helping others around the world.

Glacier Explorers

Experience 500-year-old icebergs up close on the Aoraki-Mt Cook terminal lake. The Glacier Explorers tour is the only one of its kind in New Zealand and one of only three in the world! Very few glaciers terminate into lakes and even fewer of them are accessible. See towering ice cliffs and floating icebergs from the safety of a specially designed boat. These boats provide a safe way to view unseen and inaccessible areas of New Zealand's largest glacier The Tasman.

Your accommodation: Mt Cook Motel

Mt Cook Motel, nestled in the heart of Mt. Cook Village, offers spacious self-contained units that provide comfort and convenience. Each unit is surrounded by breathtaking alpine mountain views, making it the perfect retreat for nature lovers and adventurers alike.



Day 14



Aoraki Mt Cook National Park to Queenstown

Leaving the alpine region of Aoraki Mt Cook, you'll travel through the lakeside town of Twizel, then a little further to Omarama the gliding capital of New Zealand. Continue on over the Lindis Pass, one of New Zealand's highest roads with a summit of 971 metres. Arrive in the quaint village of Tarras, then continue on a short way to the historic Bendigo Reserve, one of Otago's original gold mining settlements. Follow the road to Cromwell, and keep going through the sheer cliffs of the Kawarau Gorge towards Gibbston, one of New Zealand's premier wine growing regions. See the historic Kawarau Bridge where you can bungee jump or relax and watch others take the plunge. Approaching Queenstown, the Remarkables mountain range comes into view as you arrive into the adventure capital of New Zealand.

Queenstown

Queenstown known in Māori as Tāhuna, is home to many adrenaline-inducing activities. Nestled on the shores of Lake Wakatipu, this alpine town has very distinct seasons, and most adrenaline-filled activities can be accessed year-round. Queenstown is home to jet boating, bungy jumping, rafting, skydiving, paragliding, and even indoor thrills. If you want that rush - head out on the Shotover Jet, dive off the Nevis Bungy, freefall on the Canyon Swing, or Zip line the Gondola. While arguably the brightest gem in New Zealand's crown, Queenstown offers far more than an action-packed getaway. If you're looking for a slightly slower pace, there are plenty of recreational activities, including hiking and biking trails to explore, guided tours, boat cruises, scenic flights, or spa and wellness options to help you get away. Head to the lakefront, eat at one of the al fresco eateries, and soak up the local vibes; catch a ride on the iconic 100-year-old steamship the TSS Earnslaw; or take the Skyline Gondola and enjoy bird's-eye views of the Remarkables mountain ranges and Lake Wakatipu. Pack a picnic and go for a hike, only 20 minutes from Central Queenstown, Coronet Peak opens for summer sightseeing. You can ride the Peak Gondola to the top for panoramic views and hike the trails, or go for a bike ride on many excellent biking trails. In winter, Queenstown becomes a world-class winter resort, with four ski areas and a range of activities, bars, restaurants, and ways to relax and unwind.

SUGGESTED ACTIVITY - TSS Earnslaw Cruise and Walter Peak Gourmet BBQ Dinner

Enjoy a quintessential Kiwi experience, a delicious gourmet BBQ buffet meal, and a farm demonstration in a stunning lakeside setting. Take in the stunning views of Lake Wakatipu and its surroundings as you cruise across the lake to the historic Walter Peak high country farm aboard the TSS Earnslaw Steamship. Enjoy the ambiance of the heart of the stately homestead while your Colonel's Homestead Restaurant chef prepares a gourmet BBQ dinner. Your seasonal menu includes an extensive selection of local New Zealand produce, including succulent meats and a selection of delicious vegetables and salads. Complete your meal with your choice of delicious desserts, or New Zealand cheeses. After dinner, watch the farm dogs in action with a sheep-herding demonstration and say hello to the other farm animals. Finally, cruise home under the southern stars and enjoy the fresh night air as the lights of Queenstown draw ever closer.

Your accommodation: Scenic Suites Queenstown

Scenic Suites Queenstown offers guests exquisite style and comfort, with a selection of rooms having spectacular views over Lake Wakatipu and the Southern Alps. The hotel prides itself on its 4-star hospitality that will make your stay in Queenstown even more memorable.



Day 15



Explore Queenstown

Well-known as New Zealand's 'adventure capital', Queenstown is home to a range of adventures, from the world's first and most famous bungy jumps to jet boat thrills, white-water rafting, and skydiving. However, Queenstown offers far more than a fast-paced, action-packed holiday. Settled on the shores of beautiful Lake Wakatipu beneath a soaring panorama of the Remarkables Mountain Range, this alpine town is surrounded by many historic, gastronomic, and scenic wonders. Take a stroll through the beautiful lakefront parks and gardens, browse through market stalls on weekends, dine in wonderful al-fresco restaurants, or ride on the 100-year-old historic Steamship - TSS Earnslaw to Walter Peak Station. Take the Queenstown Gondola up to Bob's Peak and soak up the panoramic views of the magnificent lake and mountain ranges. And after all of that, if you do want the adrenaline rush, Queenstown is known for taking your pick from the Shotover Jet, Canyon Swing, Zipline, Luge, or Heli-hike.

SUGGESTED ACTIVITY - Wilderness Jet Experience with Dart River Safaris

Journey deep into the heart of the world-renowned Mt Aspiring National Park, where myth, heritage, and fantasy come to life. As one of Queenstown's most exhilarating activities, the Wilderness Jet adventures on a spectacular journey deep into the heart of the world-renowned Mount Aspiring National Park. It is important you read and understand the risks associated with this activity. For more information please see here.

Your accommodation: Scenic Suites Queenstown

Scenic Suites Queenstown offers guests exquisite style and comfort, with a selection of rooms having spectacular views over Lake Wakatipu and the Southern Alps. The hotel prides itself on its 4-star hospitality that will make your stay in Queenstown even more memorable.



Day 16



Queenstown to Franz Josef Glacier via Wānaka

From Queenstown you'll cross the Crown Range, the highest sealed road in New Zealand to arrive in the Alpine town of Wānaka, gateway to Mt Aspiring National Park. Skirting the shores of both Lake Wanaka and Hawea, you will enter the small town of Makarora. Stop at Blue Pools for a 1-hour return walk through the native beech forest to a glacier-fed swimming hole. Continue on through the remote seaside settlement of Haast before heading up the wild West Coast highway you pass through ancient temperate rainforests while getting sneak peeks of the wild coast beaches occasionally. Keep heading North and be sure to enjoy the view of the ever-changing towering snowcapped Southern Alps Mountain Range. Fox Glacier welcomes you first, then comes your destination for the night Franz Josef township.

Franz Josef

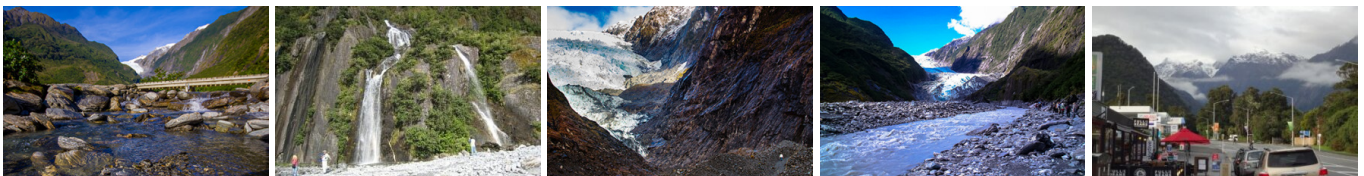
Franz Josef, named after both the local village and the nearby glacier, holds special significance in Māori culture as "Ko Roimata o Hine Hukatere" – The Tears of the Ice Maiden. This rare glacier is one of only three in the world that descends from alpine heights into a temperate rainforest, almost reaching sea level. New Zealand is home to two of these unique glaciers, Franz Josef and Fox Glacier, both highly accessible and popular with visitors. The best ways to experience the glacier are through scenic flights or, for the adventurous, a heli-hike. You can also enjoy glacier views with a short drive from the village and walking tracks. Beyond the glacier, Franz Josef offers a wealth of adventure activities and beautiful forest and alpine walks, making it a must-visit destination.

Your accommodation: Punga Grove Motel & Suites

Punga Grove is right in the heart of Franz Josef Glacier village stylish accommodation in a beautiful rainforest setting.



Day 17



Explore Franz Josef

Franz Josef is a small yet lively town in the heart of New Zealand's West Coast, best known for its spectacular 12 km-long glacier. The township is surrounded by lush, rainforest-clad mountains and has a vibrant atmosphere with plenty to explore. A variety of scenic walking trails offer incredible views of the glacier, but for a truly up-close experience, a licensed helicopter tour is the only way to set foot on the ice. Beyond the glacier, unwind in the rejuvenating Hot Pools or visit the West Coast Wildlife Centre to spot rare kiwi birds. If you're in the mood for a more relaxed day, the township is home to charming souvenir and gift shops, as well as great dining spots like SnakeBite Brewery and King Tiger. Whether you're chasing adventure or relaxation, Franz Josef is a stunning blend of wild beauty and welcoming hospitality.

Twin Glacier Scenic Helicopter Flight with The Helicopter Line

A spectacular scenic flight soaring over two of New Zealand's most famous glaciers, Fox and Franz Josef. Landing at the head of one and view the incredible sight of this frozen river as it winds its way through ancient carved valleys. It is important to read and understand the risks associated with this activity. A full risk disclosure can be found [here](#).

Your accommodation: Punga Grove Motel & Suites

Punga Grove is right in the heart of Franz Josef Glacier village stylish accommodation in a beautiful rainforest setting.



Day 18



Franz Josef to Greymouth Train Station (Return Rental Car)

Head north along the mighty West Coast highway you pass through ancient temperate rainforests while getting sneak peeks of the wild coast beach occasionally. Whataroa is the next town where you can see one of the world's rarest birds, the Kōtuku - White Heron. The Kōtuku nest at the Waitangi Roto Nature Reserve, only accessible with a guided tour from October to March. The next town is Ross which is the site of an old gold mining settlement where the local information centre offers you the chance to pan for gold. Hokitika is a great place to explore craft and gift stores and head to the coast and take in the endless sea views. The Pounamu-Greenstone on offer in Hokitika is probably some of the best you will see in the country. Continue on to Greymouth, the largest town on the West Coast and the starting point for the next leg of your journey the TranzAlpine Scenic Train. Drop your rental car at the Greymouth Train Station depot located at the train station building before boarding your train to Christchurch.

TranzAlpine Scenic Train: Greymouth to Christchurch

Considered one of the world's great train journeys, the TranzAlpine Scenic Train takes you from Greymouth to Christchurch. Travel across the South Island from the west to the east coast through Arthur's Pass National Park. From the comfort of your carriage see lush beech forest, deep river valleys and the spectacular peaks of the Southern Alps. Descend to the windswept Canterbury Plains before arriving in the city of Christchurch.

SUGGESTED ACTIVITY - TranzAlpine Scenic Plus Addon - KiwiRail

Feel like luxurious service, exclusive meals, inclusive drinks and priority check-in and boarding? The Scenic Plus add-on option is for you. Enjoy personal service with panoramic windows, spacious carriages and comfortable seating. The exclusive open-air viewing carriage is available if you feel like capturing the ultimate photo or simply wish to experience the great outdoors whilst travelling through the Southern Alps. Your food is prepared exclusively in a kitchen carriage, with paired drinks and a paddock-to-plate regionally inspired food menu all your senses will be fully engaged on this journey.

Shared Transfer from Christchurch Train Station to Christchurch CBD Accommodation with Christchurch Touring Company

On arrival at the Christchurch railway station, you will be met by a driver and transferred to your Christchurch accommodation.

Your accommodation: Quest on Cambridge

Quest on Cambridge serviced apartment-style hotel rooms offer guests a relaxed and comfortable Christchurch accommodation experience. Each room has an open-plan living area, a fully equipped kitchen, and natural light. Quest on Cambridge is a short walk from the south shopping centre and to the Botanic Gardens.



Day 19



Private Transfer from Accommodation to Airport with Christchurch Touring Company

Enjoy a seamless, private transfer from your Christchurch city accommodation directly to the Christchurch Airport in time for your departing flight.

Farewell from Aotearoa / New Zealand

Bid farewell to Aotearoa / New Zealand, taking with you unforgettable memories of its breathtaking landscapes and incredible adventures. In Māori, it is said mā te wā, which is not goodbye, it is see you soon!

Tour details

Departures:	Daily
Tour type:	Nationwide Self Drive
Starts:	Auckland
Finishes:	Christchurch
Tour length:	19
Accommodation:	Motels
Car/transport type:	

Accommodation summary

Day 1	Oaks Auckland Hotel
Day 2	Oaks Auckland Hotel
Day 3	Palm Court Motel Otorohanga
Day 4	Silver Fern Suites & Spa
Day 5	Silver Fern Suites & Spa
Day 6	Silver Fern Suites & Spa
Day 7	Adina CityLife Wellington
Day 8	Adina CityLife Wellington
Day 9	Blenheim Palms Motel
Day 10	The White Morph, Kaikōura
Day 11	Quest on Cambridge
Day 12	Quest on Cambridge
Day 13	Mt Cook Motel
Day 14	Scenic Suites Queenstown
Day 15	Scenic Suites Queenstown
Day 16	Punga Grove Motel & Suites
Day 17	Punga Grove Motel & Suites
Day 18	Quest on Cambridge