

## Southern Highlights and Milford Track Great Walk

Starting and finishing in Christchurch this tour allows time to self explore the tracks and trails of Mt. Cook National Park before venturing south and embarking on the world famous Milford Track Guided Walk. This fully guided and supported 4 day hike is with Ultimate Hikes and you spend the evenings in the wonderfully equipped lodges. From Queenstown head north to the West Coast and the glacier region before returning to Christchurch on board the Tranz Alpine Scenic Train.

The rates displayed for this tour are based on a per person occupancy in the Milford Queen Room. For single or twin room occupancy, kindly contact our sales consultants.

Starts in: Christchurch  
Finishes in: Christchurch  
Length: 14days / 13nights  
Accommodation: Boutique Lodges & Hotels  
Can be customised: Yes

This itinerary can be customised to suit you perfectly. We can add more days, remove days, change accommodations, mix it up, add activities to suit your interests or simply design and create something from scratch. Call us today to get your custom New Zealand itinerary underway.



### Inclusions:

- Includes: Late model rental cars
- Includes: Fully inclusive rental car insurance (excess may apply)
- Includes: Unlimited kms
- Includes: Afterhours emergency support while touring
- Included activity: Private Transfer Christchurch International Airport to Christchurch Accommodation
- Included activity: Electronic Travel Guide and In-Country Support App
- Included activity: The Visitor Promise - Cultural Learning Course
- Included activity: TranzAlpine Scenic Train: Greymouth to Christchurch
- Included activity: Private Transfer Christchurch Train Station to Accommodation
- Included activity: Private Transfer from Accommodation to Airport with Christchurch Touring Company
- Included activity: The Milford Track 5 Day/4 Night Guided Walk with Ultimate Hikes
- Meals included: 13 breakfasts, 5 lunches, 4 dinners



## Day 1



### Private Transfer Christchurch International Airport to Christchurch Accommodation

On arrival, you will be met by a private driver and transferred to your Christchurch accommodation.

### Welcome to Christchurch City

New Zealand's garden city is steadily being transformed into a vibrant urban destination. Encompassing a large green belt, it is known for its wide tree lined avenues and lush gardens. A great way to explore the city or easy way to see the sights or ride the historic trams across town to the renowned botanic gardens and the unique cardboard Transitional Cathedral, that's right it is built of cardboard!

### Your accommodation: The George Hotel

The George is the essence of supreme comfort. The award-winning 5 star hotel is opposite Hagley Park and just a few minutes stroll from the Botanic Gardens. It also has an award-winning restaurant, 50 Bistro onsite.



## Day 2



### Collect Rental Car

This tour's from price includes an intermediate-sized vehicle, setting you up for comfortable travels. Yet, we understand every adventure is unique! Feel free to select the perfect wheels from our incredible collection of rental cars, spanning from economy hatchbacks to premium SUVs.

### Christchurch to Aoraki-Mt Cook National Park

Drive through the heart of the South Island, crossing the vast Canterbury plains. Catch your breath in Geraldine before continuing through Fairlie. Ascending Burkes pass you'll come to the picturesque town of Lake Tekapo. Follow the road and take in the view of Aoraki-Mt Cook (New Zealand's tallest mountain) from the shores of Lake Pukaki, known for its glacier fed turquoise blue colour. Continue along the lake to your final destination Aoraki-Mt Cook Village.

### Your accommodation: Hermitage Hotel, Aoraki Wing Premium

The Hermitage Hotel ringed by magnificent snow-capped peaks of the Southern Alps, is a world-renowned tourist destination and has been an icon of superior accommodation and dining since 1884.

Meals included: Breakfast



## Day 3



## Aoraki-Mt Cook National Park

At 3754m Aoraki-Mt Cook is Aotearoa-New Zealand's highest mountain, located deep in the heart of the Southern Alps. As well as its impressive beauty, Aoraki-Mt Cook National Park is also home to a huge range of awe-inspiring sights and activities. Take to the air with Mt Cook Ski Planes for a scenic flight that includes a glacier landing. At around 27 kilometres long the Tasman Glacier is New Zealand's longest and a Glacier Explorers tour allows you to see its unique features up close.

There are many short hikes in and around the park and these are well signposted around the village. Those with an interest in the night sky should take a Big Sky Stargazing tour with the Hermitage Hotel. The region is considered to have one of the clearest night skies in the world and is one of the few gold-rated dark sky reserves worldwide.

Visit the Sir Edmund Hillary Alpine Centre for insight into this region's mountain climbing history. You'll also learn of Sir Ed's incredible achievements and his dedication to helping others around the world.

---

### Walking Tracks in Aoraki-Mt Cook National Park

Aoraki-Mt Cook Village offers a variety of short scenic walks suitable for all ages and fitness levels. Start your adventure at the Department of Conservation Information Centre, where you can learn about track conditions, local history, and the area's wildlife. Here are a few popular walks to explore: Bowen Bush Walk: 10-minute return Glencoe Walk: 10-minute return Red Tarns Track: 2-hour return Kea Point Walk: 2-hour return Sealy Tarns Track: 3 - 4 hours return Please be aware that at Aoraki/Mount Cook, you will need to pay for parking at the White Horse Hill car park. The cost is \$5 per hour or \$25 for the full day. A 20-minute free period is available for quick drop-offs.

---

### SUGGESTED ACTIVITY - Glacier Explorers

Experience 500-year-old icebergs up close on the Aoraki-Mt Cook terminal lake. The Glacier Explorers tour is the only one of its kind in New Zealand and one of only three in the world! Very few glaciers terminate into lakes and even fewer of them are accessible. See towering ice cliffs and floating icebergs from the safety of a specially designed boat. These boats provide a safe way to view unseen and inaccessible areas of New Zealand's largest glacier The Tasman.

---

### SUGGESTED ACTIVITY - Glacier Highlights - Scenic Flight with Glacier Landing

Take in the spectacular Southern Alps, including New Zealand's highest peak Aoraki Mt Cook and the constantly changing glacial landscape. See the Hochstetter Icefall as you fly beneath the face of Mount Cook then along the length of the Tasman Glacier before landing on the glacier itself. Experience the silence of the mountains, broken only by the rumbling of an avalanche and creaking of the snow and ice beneath your feet. You'll take off again for another incredible flight over peaks, ice falls, alpine lakes and climbing huts. This flight offers fantastic close-up views of Aoraki Mount Cook, Mt Tasman and the Southern Alps from Aoraki Mount Cook National Park. It is important you read and understand the risks associated with this activity. For more information please see here.

---

### Your accommodation: Hermitage Hotel, Aoraki Wing Premium

The Hermitage Hotel ringed by magnificent snow-capped peaks of the Southern Alps, is a world-renowned tourist destination and has been an icon of superior accommodation and dining since 1884.

Meals included: Breakfast



## Day 4



### Aoraki Mt Cook National Park to Queenstown

Leaving the alpine region of Aoraki Mt Cook, you'll travel through the lakeside town of Twizel, then a little further to Omarama the gliding capital of New Zealand. Continue on over the Lindis Pass, one of New Zealand's highest roads with a summit of 971 metres. Arrive in the quaint village of Tarras, then continue on a short way to the historic Bendigo Reserve, one of Otago's original gold mining settlements. Follow the road to Cromwell, and keep going through the sheer cliffs of the Kawarau Gorge towards Gibbston, one of New Zealand's premier wine growing regions. See the historic Kawarau Bridge where you can bungy jump or relax and watch others take the plunge. Approaching Queenstown, the Remarkables mountain range comes into view as you arrive into the adventure capital of New Zealand.

---

### Return your vehicle to Queenstown depot

Explore more of Queenstown before dropping your rental car at the depot and attending your track briefing.

---

## Queenstown

Queenstown known in Māori as Tāhuna, is home to many adrenaline-inducing activities. Nestled on the shores of Lake Wakatipu, this alpine town has very distinct seasons, and most adrenaline-filled activities can be accessed year-round. Queenstown is home to jet boating, bungy jumping, rafting, skydiving, paragliding, and even indoor thrills. If you want that rush - head out on the Shotover Jet, dive off the Nevis Bungy, freefall on the Canyon Swing, or Zip line the Gondola. While arguably the brightest gem in New Zealand's crown, Queenstown offers far more than an action-packed getaway. If you're looking for a slightly slower pace, there are plenty of recreational activities, including hiking and biking trails to explore, guided tours, boat cruises, scenic flights, or spa and wellness options to help you get away. Head to the lakefront, eat at one of the al fresco eateries, and soak up the local vibes; catch a ride on the iconic 100-year-old steamship the TSS Earnslaw; or take the Skyline Gondola and enjoy bird's-eye views of the Remarkables mountain ranges and Lake Wakatipu. Pack a picnic and go for a hike, only 20 minutes from Central Queenstown, Coronet Peak opens for summer sightseeing. You can ride the Peak Gondola to the top for panoramic views and hike the trails, or go for a bike ride on many excellent biking trails. In winter, Queenstown becomes a world-class winter resort, with four ski areas and a range of activities, bars, restaurants, and ways to relax and unwind.&nbsp;

### Your accommodation: Millennium Hotel Queenstown

Right in the heart of the action, the Millennium Hotel is just minutes from Queenstown's central shopping and entertainment district. Outdoor activities such as bungy jumping, white water rafting and jet boating are just some of the easily accessible activities nearby in New Zealand's adventure capital.

Meals included:        Breakfast



## Day 5



### Explore Queenstown

Well-known as New Zealand's 'adventure capital', Queenstown is home to a range of adventures, from the world's first and most famous bungy jumps to jet boat thrills, white-water rafting, and skydiving. However, Queenstown offers far more than a fast-paced, action-packed holiday. Settled on the shores of beautiful Lake Wakatipu beneath a soaring panorama of the Remarkables Mountain Range, this alpine town is surrounded by many historic, gastronomic, and scenic wonders. Take a stroll through the beautiful lakefront parks and gardens, browse through market stalls on weekends, dine in wonderful al-fresco restaurants, or ride on the 100-year-old historic Steamship - TSS Earnslaw to Walter Peak Station. Take the Queenstown Gondola up to Bob's Peak and soak up the panoramic views of the magnificent lake and mountain ranges. And after all of that, if you do want the adrenaline rush, Queenstown is known for taking your pick from the Shotover Jet, Canyon Swing, Zipline, Luge, or Heli-hike.

### Milford Track Guided Walk Briefing

Please check in at 14:45pm on the day prior to your walk for a group pre-track briefing. The briefing is held at the Ultimate Hikes Centre, Ground Floor, The Station Building, Duke Street Entrance, Queenstown. At the briefing, you will have the opportunity to confirm your dietary, medical information, and emergency contact details. You will be able to pick up any gear you need or purchase any last-minute items. The customer service staff will also give you an overview of what to expect while you are on track. If you cannot make the pre-track briefing, please contact Reservations on +64 3 450 1940 or [info@ultimatehikes.co.nz](mailto:info@ultimatehikes.co.nz) as soon as possible.

### SUGGESTED ACTIVITY - Shotover Jet Canyon Jet Boat Ride

Shotover Jet is the only company permitted to operate in the Shotover River Canyons. It's a thrilling ride! Skim past rocky outcrops at close range in your Shotover Jet 'Big Red', as you twist and turn through the narrow canyons at breathtaking speeds. And a major highlight - hold tight for the world-famous Shotover Jet full 360-degree spins! It is important you read and understand the risks associated with this activity. For more information please see [here](#).

### Your accommodation: Millennium Hotel Queenstown

Right in the heart of the action, the Millennium Hotel is just minutes from Queenstown's central shopping and entertainment district. Outdoor activities such as bungy jumping, white water rafting and jet boating are just some of the easily accessible activities nearby in New Zealand's adventure capital.

Meals included:        Breakfast



## Day 6



### The Milford Track 5 Day/4 Night Guided Walk with Ultimate Hikes

Traversing the heart of New Zealand's wild fjord country, the Milford Track has long been described as "the finest walk in the world". Since Quintin Mackinnon pioneered the route in 1888, everyone from hardened trekkers to novices sporting their first pair of boots has taken up the challenge of the Milford Track.

The Fiordland National Park is the cornerstone of the Te Wahipounamu Southwest New Zealand World Heritage Area. Enjoy close encounters with the native birdlife: the Robin, Kea, Weka, Fantail, Parakeet, Bellbird, and even Kiwi have been spotted! Walkers on the track to Milford Sound encounter Fiordland at its most spectacular: deep lakes, silent fjords, luxuriant forest, and sheer canyons carved out of imposing granite define this landscape. On a fine day, there is a postcard shot around every corner, but only when it rains and torrents of water cascade down the mountainsides have you truly experienced the magic of the Milford Track.

The Milford Track Guided Walk is a 5-day, 4-night all-inclusive guided walk from Queenstown to Queenstown through the heart of Fiordland National Park to Milford Sound. The package includes all transport, accommodation, meals, snacks, backpacks, and rain jackets. Accommodation is in lodges and you will be led by expert Ultimate Hikes guides. It is important you read and understand the risks associated with this activity. For more information please see here.

---

### Queenstown to Glade House

The coach departs from the Ultimate Hikes Centre in Queenstown. Please arrive by 9.15am to meet your guides and board the coach for the two hour drive to Te Anau. We will have lunch in Te Anau before travelling on to Te Anau Downs, where a boat will take you up to the start of the track at the northern end of Lake Te Anau. It's a short walk to the historic Glade House, where you will be greeted with afternoon tea and shown to your room. Your guides will take you on a nature walk in the afternoon to give you an idea of the terrain and the environment you will be walking. In the evening, you'll have time to get to know your group over dinner.

---

### Your accommodation: Glade House

Located at the head of Lake Te Anau and the mouth of the Clinton River, Glade House serves as the historic starting point for the legendary Milford Track. Originally built in 1895 as a holiday house for tourists, the site has been rebuilt several times following fires in 1928 and 1929.

Meals included: Breakfast, Lunch, Dinner



## Day 7



### Glade House to Pompolona

Your first full day of walking begins by crossing the Clinton River bridge. The smooth track follows the river up the valley to the Hirere Falls lunch shelter. Take a side walk to the wetlands, a complex eco-system unique to this section of track. After lunch look out for your first glimpse of Omanui/McKinnon Pass in the distance. You'll stay in the beech forest, until you come out onto the Prairie & detour down to soak your feet in Prairie Lake. From this meadow you can capture the true nature of the ice-carved Clinton Canyon. From here, it's a short climb to Pompolona Lodge. Today's walk is 16 km (10 miles) and takes 5-7 hours.

---

### Your accommodation: Pompolona Lodge

Nestled in the picturesque Clinton Valley, Pompolona Lodge is a private sanctuary used by guided walkers on the second night of the Milford Track. The lodge is famously named after the traditional "Pompolona" scones once served by explorer Quintin MacKinnon, who reportedly learned the recipe in Pamplona, Spain.

Meals included: Breakfast, Lunch, Dinner



## Day 8



### Pompolona Lodge to Quintin Lodge

From Pompolona Lodge the track leads up to Lake Mintaro at the head of the Clinton Valley, before climbing the Omanui/McKinnon Pass in a series of zig-zags. Take your time and enjoy the views. At the top you can rest at McKinnon memorial before passing the highest point and stopping for lunch in Pass Hut overlooking the Clinton Valley. The descent into the Arthur Valley is steep and uneven so take care and use poles. Viewing platforms give you a great view of the Cascades waterfalls. Quintin Lodge is a welcome sight at the bottom of the Pass. Take a short break to revive with a drink and a snack then we highly recommend doing the optional 90-minute round trip to Sutherland Falls, at 580m/1904ft it is one of the highest in the world and well worth seeing. Today's hike is 15 km (9 miles) and takes 6-8 hours.

### Your accommodation: Quintin Lodge

The lodge is situated at the foot of the Mackinnon Pass on the Roaring Burn River. It is historically significant, named after Quintin McKinnon, the explorer who discovered the overland route to Milford Sound in 1888.

Meals included: Breakfast, Lunch, Dinner



## Day 9



### Quintin to Mitre Peak Lodge via Sandfly Point

Your final day on the track is the longest section at 21km. You'll walk down the Arthur Valley to the historic Boatshed. After a short break and a hot drink, the track continues on past MacKay Falls through lush beech forest to the lunch spot at Giants Gate waterfall. The final stretch of the track follows tranquil Lake Ada to Sandfly Point. From Sandfly Point it is a short boat trip across the renowned Milford Sound; the fjord often referred to as the eighth wonder of the world. Mitre Peak, the famously photographed pinnacle rises almost sheer from the Sound to a height of 1692m (5551ft). At Mitre Peak Lodge, relax in the bar enjoying the view, before sitting down to a celebratory dinner. Today enjoy 21km (13 miles) 6-8 hours of walking.

### Your accommodation: Mitre Peak Lodge

Mitre Peak Lodge is a comfortable, motel-style property offering the only overnight accommodation at Milford Sound for guided hikers. It provides a much-needed sanctuary after the final 21km leg of the journey, with captivating views of the iconic Mitre Peak directly from many of its guest rooms.

Meals included: Breakfast, Lunch, Dinner



## Day 10



## Mitre Peak Lodge to Te Anau and Queenstown

This morning after breakfast we'll take you on a cruise on Milford Sound. Watch for dolphins and fur seals and, if the waterfalls are in full flow, you'll have seen Fiordland at its very best! Following the cruise it's time to head back to Queenstown. The coach trip follows the scenic Milford Road through Homer Tunnel and on to Te Anau, where there will be a short break before the last leg of the journey to Queenstown. Lunch will be eaten along the way. Pending weather and traffic conditions, the group will return to Queenstown at approximately 16:00.

### Your accommodation: Millennium Hotel Queenstown

Right in the heart of the action, the Millennium Hotel is just minutes from Queenstown's central shopping and entertainment district. Outdoor activities such as bungy jumping, white water rafting and jet boating are just some of the easily accessible activities nearby in New Zealand's adventure capital.

Meals included: Breakfast, Lunch



## Day 11



### Collect Rental Car

This tour's from price includes an intermediate-sized vehicle, setting you up for comfortable travels. Yet, we understand every adventure is unique! Feel free to select the perfect wheels from our incredible collection of rental cars, spanning from economy hatchbacks to premium SUVs.

### Queenstown to Franz Josef Glacier via Wānaka

From Queenstown you'll cross the Crown Range, the highest sealed road in New Zealand to arrive in the Alpine town of Wānaka, gateway to Mt Aspiring National Park. Skirting the shores of both Lake Wanaka and Hawea, you will enter the small town of Makarora. Stop at Blue Pools for a 1-hour return walk through the native beech forest to a glacier-fed swimming hole. Continue on through the remote seaside settlement of Haast before heading up the wild West Coast highway you pass through ancient temperate rainforests while getting sneak peeks of the wild coast beaches occasionally. Keep heading North and be sure to enjoy the view of the ever-changing towering snowcapped Southern Alps Mountain Range. Fox Glacier welcomes you first, then comes your destination for the night Franz Josef township.

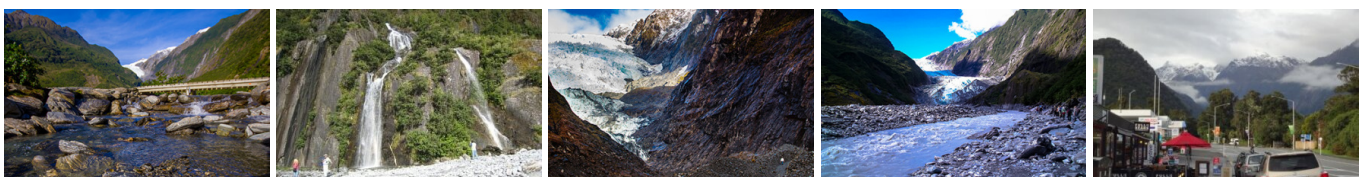
### Your accommodation: Scenic Hotel Franz Josef Glacier

Only a breath away from the Franz Josef Glacier, Scenic Hotel is located in the heart of Franz Josef Village. Here you will find all of the amenities you would expect, as well as being close to the shops, restaurants and activities on offer in the beautiful Westland region.

Meals included: Breakfast



## Day 12



### Explore Franz Josef

Franz Josef is a small yet lively town in the heart of New Zealand's West Coast, best known for its spectacular 12 km-long glacier. The township is surrounded by lush, rainforest-clad mountains and has a vibrant atmosphere with plenty to explore. A variety of scenic walking trails offer incredible views of the glacier, but for a truly up-close experience, a licensed helicopter tour is the only way to set foot on the ice. Beyond the glacier, unwind in the rejuvenating Hot Pools or visit the West Coast Wildlife Centre to spot rare kiwi birds. If you're in the mood for a more relaxed day, the township is home to charming souvenir and gift shops, as well as great dining spots like SnakeBite Brewery and King Tiger. Whether you're chasing adventure or relaxation, Franz Josef is a stunning blend of wild beauty and welcoming hospitality.

## SUGGESTED ACTIVITY - Twin Glacier Scenic Helicopter Flight with The Helicopter Line

A spectacular scenic flight soaring over two of New Zealand's most famous glaciers, Fox and Franz Josef. Landing at the head of one and view the incredible sight of this frozen river as it winds its way through ancient carved valleys. It is important to read and understand the risks associated with this activity. A full risk disclosure can be found [here](#).

---

### Your accommodation: Scenic Hotel Franz Josef Glacier

Only a breath away from the Franz Josef Glacier, Scenic Hotel is located in the heart of Franz Josef Village. Here you will find all of the amenities you would expect, as well as being close to the shops, restaurants and activities on offer in the beautiful Westland region.

Meals included: Breakfast



---

## Day 13



### Franz Josef to Greymouth Train Station (Return Rental Car)

Head north along the mighty West Coast highway you pass through ancient temperate rainforests while getting sneak peeks of the wild coast beach occasionally. Whataroa is the next town where you can see one of the world's rarest birds, the Kōtuku - White Heron. The Kōtuku nest at the Waitangi Roto Nature Reserve, only accessible with a guided tour from October to March. The next town is Ross which is the site of an old gold mining settlement where the local information centre offers you the chance to pan for gold. Hokitika is a great place to explore craft and gift stores and head to the coast and take in the endless sea views. The Pounamu-Greenstone on offer in Hokitika is probably some of the best you will see in the country. Continue on to Greymouth, the largest town on the West Coast and the starting point for the next leg of your journey the TranzAlpine Scenic Train. Drop your rental car at the Greymouth Train Station depot located at the train station building before boarding your train to Christchurch.

---

### Return your rental car

Return your rental vehicle to your designated depot before your next adventure.

---

### TranzAlpine Scenic Train: Greymouth to Christchurch

Considered one of the world's great train journeys, the TranzAlpine Scenic Train takes you from Greymouth to Christchurch. Travel across the South Island from the west to the east coast through Arthur's Pass National Park. From the comfort of your carriage see lush beech forest, deep river valleys and the spectacular peaks of the Southern Alps. Descend to the windswept Canterbury Plains before arriving in the city of Christchurch.

---

### Private Transfer Christchurch Train Station to Accommodation

On arrival at the Christchurch train station, you will be met by a private driver and transferred to your accommodation.

---

### Your accommodation: The George Hotel

The George is the essence of supreme comfort. The award-winning 5 star hotel is opposite Hagley Park and just a few minutes stroll from the Botanic Gardens. It also has an award-winning restaurant, 50 Bistro onsite.

Meals included: Breakfast



---

## Day 14



## Private Transfer from Accommodation to Airport with Christchurch Touring Company

Enjoy a seamless, private transfer from your Christchurch city accommodation directly to the Christchurch Airport in time for your departing flight.

---

## Farewell from Aotearoa / New Zealand

Bid farewell to Aotearoa / New Zealand, taking with you unforgettable memories of its breathtaking landscapes and incredible adventures. In Māori, it is said mā te wā, which is not goodbye, it is see you soon!

---

---

## Tour details

Departures:	Daily
Tour type:	South Island Self Drive
Starts:	Christchurch
Finishes:	Christchurch
Tour length:	14
Accommodation:	Boutique Lodges & Hotels
Car/transport type:	

---

## Accommodation summary

Day 1	The George Hotel
Day 2	Hermitage Hotel, Aoraki Wing Premium
Day 3	Hermitage Hotel, Aoraki Wing Premium
Day 4	Millennium Hotel Queenstown
Day 5	Millennium Hotel Queenstown
Day 6	Glade House
Day 7	Pompolona Lodge
Day 8	Quintin Lodge
Day 9	Mitre Peak Lodge
Day 10	Millennium Hotel Queenstown
Day 11	Scenic Hotel Franz Josef Glacier
Day 12	Scenic Hotel Franz Josef Glacier
Day 13	The George Hotel