



9 day Southern Wonders (Fly & Coach)

Fly from Auckland to Christchurch with Air New Zealand to take this classic 9 day tour. Visit Mt Cook National Park, Queenstown, Fiordland, Milford Sound and the West Coast Glaciers and includes the Tranz Alpine Scenic Train journey. Return to Auckland with Air New Zealand.

Starts in: Auckland
Finishes in: Auckland
Length: 9days / 8nights
Accommodation: Hotel 4 star
Can be customised: Yes

This itinerary can be customised to suit you perfectly. We can add more days, remove days, change accommodations, mix it up, add activities to suit your interests or simply design and create something from scratch. Call us today to get your custom New Zealand itinerary underway.



Inclusions:

Includes: All coach transport
Includes: Afterhours emergency support while touring
Included activity: Electronic Travel Guide and In-Country Support App
Included activity: Christchurch to Aoraki-Mt Cook via Lake Tekapo Small Group Tour with Cheeky Kiwi - Lunch Included
Included activity: Milford Sound Cruise and Coach Tour from Queenstown with RealNZ - Lunch Included
Included activity: Franz Josef to Greymouth Train Station with Hokitika Scenic Tours
Included activity: Private Transfer Christchurch Train Station to Accommodation
Included activity: Air New Zealand flight Christchurch to Auckland

Includes: All pick ups/drop offs at destinations
Included activity: Air New Zealand flight Auckland to Christchurch
Included activity: Private Transfer Christchurch International Airport to Christchurch Accommodation
Included activity: Aoraki-Mount Cook to Queenstown Small Group Tour with Cheeky Kiwi
Included activity: Queenstown to Franz Josef with Glacier Shuttles
Included activity: TranzAlpine Scenic Train: Greymouth to Christchurch
Included activity: Private Transfer from Christchurch Accommodation to Christchurch Airport with Christchurch Touring Company
: 8 breakfasts, 1 lunch

Day 1



Air New Zealand flight Auckland to Christchurch

Private Transfer Christchurch International Airport to Christchurch Accommodation

On arrival, you will be met by a private driver and transferred to your Christchurch accommodation.

Welcome to Christchurch City

Christchurch New Zealand's garden city is steadily being transformed into a vibrant urban destination. Encompassing a large green belt, it is known for its wide tree lined avenues and lush gardens. A great way to explore the city or easy way to see the sights or ride the historic trams across town to the renowned botanic gardens and the unique cardboard Transitional Cathedral, that's right it is built of cardboard!

Your accommodation: The George Hotel

The George is the essence of supreme comfort. The award-winning 5 star hotel is opposite Hagley Park and just a few minutes stroll from the Botanic Gardens. It also has an award-winning restaurant, 50 Bistro onsite.



Day 2



Christchurch to Aoraki-Mt Cook via Lake Tekapo Small Group Tour with Cheeky Kiwi - Lunch Included

Departing from Christchurch, you will make your way through the vast Canterbury Plains. Enjoy a delicious stop at Fairlie Bakehouse before marvelling at the vibrant blue waters of Lake Tekapo and the iconic Church of the Good Shepherd. Travel past the stunning Lake Pukaki, framed by Aoraki-Mt Cook and the Southern Alps, and immerse yourself in the breathtaking landscapes of Aoraki-Mt Cook National Park. Capture unforgettable photos and explore New Zealand's highest peak without breaking a sweat!

SUGGESTED ACTIVITY - Glacier Explorers

Experience 500-year-old icebergs up close on the Aoraki-Mt Cook terminal lake. The Glacier Explorers tour is the only one of its kind in New Zealand and one of only three in the world! Very few glaciers terminate into lakes and even fewer of them are accessible. See towering ice cliffs and floating icebergs from the safety of a specially designed boat. These boats provide a safe way to view unseen and inaccessible areas of New Zealand's largest glacier The Tasman.

Your accommodation: Hermitage Hotel, Aoraki Wing Premium

The Hermitage Hotel ringed by magnificent snow-capped peaks of the Southern Alps, is a world-renowned tourist destination and has been an icon of superior accommodation and dining since 1884.

Meals included: Breakfast



Day 3



Aoraki-Mount Cook to Queenstown Small Group Tour with Cheeky Kiwi

This scenic tour winds its way from Aoraki-Mt Cook to some of the best sights the Southern Alps area has to offer; stunningly blue Lake Pukaki, High Country Salmon, the panoramic Lindis Pass, the grand Kawarau Gorge before finally coming to an end in breathtaking Tāhuna-Queenstown, the adventure capital of the world.

Your accommodation: Millennium Hotel Queenstown

Right in the heart of the action, the Millennium Hotel is just minutes from Queenstown's central shopping and entertainment district. Outdoor activities such as bungy jumping, white water rafting and jet boating are just some of the easily accessible activities nearby in New Zealand's adventure capital.

Meals included: Breakfast



Day 4



Explore Queenstown

Queenstown, known in Māori as Tāhuna is celebrated as New Zealand's 'adventure capital'. Though Queenstown offers far more than a fast-paced, action-packed holiday. Settled on the shores of Lake Wakatipu beneath a soaring panorama of the Remarkables Mountain Range, this alpine town is surrounded by a plethora of historic, gastronomic, and scenic wonders. Whether you are looking for a scenic short walk or a longer one, you will find the perfect hike or bike trail in Queenstown. Explore Queenstown Gardens, or try out more challenging trails up to Ben Lomond Walkaway or Queenstown Hill Walking Track. Enjoy iconic views and take Queenstown Gondola up 450 metres to Bob's Peak, or ride on the 100-year-old Steamship - the TSS Earnslaw - to Walter Peak Station for dinner and a farm tour. Browse the waterfront cafes and al fresco restaurants, try out the famous Fergburger, or grab a dessert at Patagonia Chocolates.

SUGGESTED ACTIVITY - Queenstown Skyline Gondola Ride

Hop aboard the Skyline Gondola - the steepest cable car lift in the Southern Hemisphere! From which you can take in the awe-inspiring views of this spectacular landscape. Sit back and relax as you enjoy panoramic views of The Remarkables, Walter Peak, Cecil Peak, Coronet Peak and the magnificent Lake Wakatipu.

SUGGESTED ACTIVITY - TSS Earnslaw Cruise and Walter Peak Gourmet BBQ Dinner

Enjoy a quintessential Kiwi experience, a delicious gourmet BBQ buffet meal, and a farm demonstration in a stunning lakeside setting. Take in the stunning views of Lake Wakatipu and its surroundings as you cruise across the lake to the historic Walter Peak high country farm aboard the TSS Earnslaw Steamship. Enjoy the ambiance of the heart of the stately homestead while your Colonel's Homestead Restaurant chef prepares a gourmet BBQ dinner. Your seasonal menu includes an extensive selection of local New Zealand produce, including succulent meats and a selection of delicious vegetables and salads. Complete your meal with your choice of delicious desserts, or New Zealand cheeses. After dinner, watch the farm dogs in action with a sheep-herding demonstration and say hello to the other farm animals. Finally, cruise home under the southern stars and enjoy the fresh night air as the lights of Queenstown draw ever closer.

Your accommodation: Millennium Hotel Queenstown

Right in the heart of the action, the Millennium Hotel is just minutes from Queenstown's central shopping and entertainment district. Outdoor activities such as bungy jumping, white water rafting and jet boating are just some of the easily accessible activities nearby in New Zealand's adventure capital.

Meals included: Breakfast



Day 5



Milford Sound Cruise and Coach Tour from Queenstown with RealNZ - Lunch Included

Departing from Queenstown sit back and relax aboard a luxury glass-roofed coach to enjoy a relaxing trip along the shores of Lake Wakatipu and through the rolling countryside to Te Anau. The coach driver provides an informative commentary and plenty of photo opportunities. After a morning tea break in Te Anau, the coach continues along the spectacular Milford Road. On reaching Piopiotahi-Milford Sound, board your vessel for a leisurely cruise in the fiord. The cruise provides excellent viewing opportunities and plenty of time is available to enjoy waterfalls, rainforests, mountains and wildlife. Rain or shine, every day in Piopiotahi-Milford Sound will leave you in awe.

Your accommodation: Millennium Hotel Queenstown

Right in the heart of the action, the Millennium Hotel is just minutes from Queenstown's central shopping and entertainment district. Outdoor activities such as bungee jumping, white water rafting and jet boating are just some of the easily accessible activities nearby in New Zealand's adventure capital.

Meals included: Breakfast, Lunch



Day 6



Queenstown to Franz Josef with Glacier Shuttles

Leaving Queenstown, travel past picturesque scenery of massive mountain peaks and crystal-clear blue lakes. Journey across the Haast Pass to the other side of the Southern Alps, the landscape changes dramatically. Enter the wild and wonderful West Coast, a remote and unspoiled region. Wind your way past native rainforest, rocky coastlines and powerful waterfalls. Your journey concludes in the village of Franz Josef, your next base for exploration.

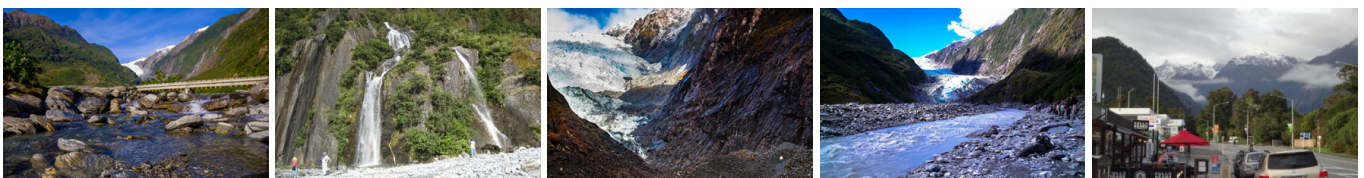
Your accommodation: Scenic Hotel Franz Josef Glacier

Only a breath away from the Franz Josef Glacier, Scenic Hotel is located in the heart of Franz Josef Village. Here you will find all of the amenities you would expect, as well as being close to the shops, restaurants and activities on offer in the beautiful Westland region.

Meals included: Breakfast



Day 7



SUGGESTED ACTIVITY - Explore Franz Josef

Franz Josef is a small yet lively town in the heart of New Zealand's West Coast, best known for its spectacular 12 km-long glacier. The township is surrounded by lush, rainforest-clad mountains and has a vibrant atmosphere with plenty to explore. A variety of scenic walking trails offer incredible views of the glacier, but for a truly up-close experience, a licensed helicopter tour is the only way to set foot on the ice. Beyond the glacier, unwind in the rejuvenating Hot Pools or visit the West Coast Wildlife Centre to spot rare kiwi birds. If you're in the mood for a more relaxed day, the township is home to charming souvenir and gift shops, as well as great dining spots like SnakeBite Brewery and King Tiger. Whether you're chasing adventure or relaxation, Franz Josef is a stunning blend of wild beauty and welcoming hospitality.

Your accommodation: Scenic Hotel Franz Josef Glacier

Only a breath away from the Franz Josef Glacier, Scenic Hotel is located in the heart of Franz Josef Village. Here you will find all of the amenities you would expect, as well as being close to the shops, restaurants and activities on offer in the beautiful Westland region.

Meals included: Breakfast



Day 8



Franz Josef to Greymouth Train Station with Hokitika Scenic Tours

Head north from Franz Josef through to the historic gold mining region of Hokitika. Known for its Pounamu (New Zealand Greenstone) this seaside town has a rich history dating back to the 1860's. Continue on to Greymouth, the largest town on the West Coast and the starting point for the next leg of your journey - the TranzAlpine Scenic Train.

TranzAlpine Scenic Train: Greymouth to Christchurch

Considered one of the world's great train journeys, the TranzAlpine Scenic Train takes you from Greymouth to Christchurch. Travel across the South Island from the west to the east coast through Arthur's Pass National Park. From the comfort of your carriage see lush beech forest, deep river valleys and the spectacular peaks of the Southern Alps. Descend to the windswept Canterbury Plains before arriving in the city of Christchurch.

Private Transfer Christchurch Train Station to Accommodation

On arrival at the Christchurch train station, you will be met by a private driver and transferred to your accommodation.

Your accommodation: The George Hotel

The George is the essence of supreme comfort. The award-winning 5 star hotel is opposite Hagley Park and just a few minutes stroll from the Botanic Gardens. It also has an award-winning restaurant, 50 Bistro onsite.

Meals included: Breakfast



Day 9



Private Transfer from Christchurch Accommodation to Christchurch Airport with Christchurch Touring Company

A private transfer will collect you from your accommodation and transfer you to Christchurch Airport in time for your departing flight.

Air New Zealand flight Christchurch to Auckland

Fly Air New Zealand to Auckland to meet your onward flight.

Tour details

Departures:	Daily
Tour type:	Independant Bus & Coach
Starts:	Auckland
Finishes:	Auckland
Tour length:	9
Accommodation:	Hotel 4 star
Car/transport type:	

Included activities

Includes	All coach tour transport as specified in this tour package
Includes	All breakfasts
Includes	Private train station transfers
Includes	Private airport transfers
Includes	Air New Zealand Airfare Auckland to Christchurch
Includes	Air New Zealand Airfare Christchurch to Auckland
Includes	TranzAlpine Train from Greymouth to Christchurch

Accommodation summary

Day 1	The George Hotel
Day 2	Hermitage Hotel, Aoraki Wing Premium
Day 3	Millennium Hotel Queenstown
Day 4	Millennium Hotel Queenstown
Day 5	Millennium Hotel Queenstown
Day 6	Scenic Hotel Franz Josef Glacier
Day 7	Scenic Hotel Franz Josef Glacier
Day 8	The George Hotel