

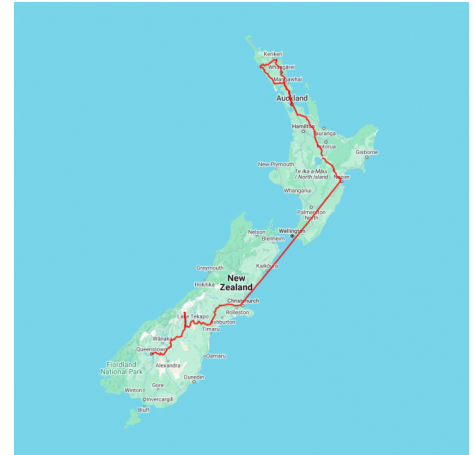


Golfing Tour of New Zealand

Discover New Zealand's exceptional golfing landscape, home to nearly 400 courses, many of which warmly welcome international visitors for casual play. This remarkable tour spans from the subtropical Bay of Islands to the alpine beauty of Queenstown, presenting an enticing selection of premier courses along the way. Imagine playing at renowned locations like Kinloch Golf Course, Rosewood Kauri Cliffs, Cape Kidnappers, and Millbrook, with an unforgettable helicopter golf experience to top it off. Beyond the greens, you'll also encounter some of New Zealand's most breathtaking destinations, including glacier explorations and a cruise on the historic TSS Earnslaw.

Starts in: Auckland
Finishes in: Queenstown
Length: 17days / 16nights
Accommodation: Hotel 4 star
Can be customised: Yes

This itinerary can be customised to suit you perfectly. We can add more days, remove days, change accommodations, mix it up, add activities to suit your interests or simply design and create something from scratch. Call us today to get your custom New Zealand itinerary underway.



Inclusions:

Includes: Late model rental cars

Includes: Unlimited kms

Included activity: Private Transfer Auckland Airport to your Auckland Accommodation with Tourcorp

Included activity: The Visitor Promise - Cultural Learning Course

Included activity: Glacier Explorers

Included activity: Queenstown Golf Club

Included activity: Over The Top Golf Fly-Drive-Putt

Included activity: Rosewood Kauri Cliffs Golf Course

Included activity: Rosewood Cape Kidnappers Golf Course

Includes: Fully inclusive rental car insurance (excess may apply)

Includes: Afterhours emergency support while touring

Included activity: Electronic Travel Guide and In-Country Support App

Included activity: Air New Zealand flight Napier to Christchurch

Included activity: TSS Earnslaw Cruise and Walter Peak Gourmet BBQ Dinner

Included activity: Gondola Ride with Skyline Queenstown

Included activity: Millbrook Golf Course

Included activity: Kinloch Golf Course

: 16 breakfasts, 1 special dinner

Day 1



Private Transfer Auckland Airport to your Auckland Accommodation with Tourcorp

You will be met at the Auckland airport by the driver and transferred to your Auckland accommodation.

Welcome to Auckland

Welcome to Auckland, known in Māori as Tāmaki Makaurau. Auckland is New Zealand's vibrant "City of Sails," and the country's largest metropolitan area. Nestled between the Pacific Ocean and the Tasman Sea. Surrounded by native bush, lush rainforests, and pristine beaches, Auckland is a haven for both adventurers and urban explorers. Wander through world-class museums and galleries in the city centre or enjoy a peaceful retreat at the Auckland Gardens, where stunning landscapes showcase New Zealand's diverse flora. Stroll along the lively waterfront to savour fresh seafood and international cuisine at Viaduct restaurants. For an unforgettable perspective, ascend the iconic SkyTower, New Zealand's tallest structure, and take in panoramic views of the city and its picturesque islands.

SUGGESTED ACTIVITY - Harbour Sailing Dinner Cruise with Explore

This unique on-water sailing and dining experience is not to be missed while you're in Auckland. Enjoy smooth sailing on the Waitemata Harbour - then watch this photogenic city come alive with twinkling lights. Enjoy your meal as you sail around the beautiful Auckland Harbour taking in the view as the sun slowly sets. You'll be treated to canapes and a drink as you set off towards Westhaven Marina. To finish the evening off, savour your dessert course as you leisurely sail back to Auckland's vibrant Viaduct Harbour.

Your accommodation: Grand Millennium Auckland

Located in the heart of the city, a stay at Grand Millennium Auckland places you within walking distance of some of the city's finest dining, shopping and entertainment venues.



Day 2



Collect Rental Car

This tour's from price includes an intermediate-sized vehicle, setting you up for comfortable travels. Yet, we understand every adventure is unique! Feel free to select the perfect wheels from our incredible collection of rental cars, spanning from economy hatchbacks to premium SUVs.

Car Instructions

On collection of your rental car, you will be required to sign a rental agreement and provide a credit card for a security bond authorisation. Remember, the bond is only authorised, not charged, at this stage. While your rental rate may include coverage for mechanical breakdowns (please verify your specific car inclusions), you may also have the option to purchase roadside assistance for non-mechanical issues. All drivers must present a physical credit card, valid driving license and passport to be added to the agreement, with potential additional charges for extra drivers. Debit cards may be used on select vehicles. If you are presenting an international drivers license, this must be accompanied by the original domestic license. Drivers under 21 are not permitted, and those aged 21-24 may face a surcharge, both payable directly to the rental company. For detailed information, please refer to your rental car inclusions. See this important information if you are traveling between the North and South Islands on the ferry

Muriwai Golf Club - suggested activity

Muriwai Golf Club is a links course situated in a protected bird sanctuary and famous for its Gannet colony. There are no encroaching buildings, no traffic sounds or large crowds. The only sound you'll hear are the calls of native birds and the surf breaking on the beach. The course is of naturally rolling fairways and breathtaking views of sea and forests from every hole. To play at Muriwai is to play as the game was meant to be played. To book, please organise with the golf resort directly here.

Formosa Golf Resort - suggested activity

Formosa Golf Resort is listed in The Finest Golf Clubs of the World and covers an area of 440 acres. The course has panoramic views of Waiheke Island and Rangitoto from its cliff-top and coastal fairways. Designed by internationally renowned golfing professional, Bob Charles, the course features 18 holes of sensational golf. To book, please organise with the golf resort directly here.

Your accommodation: Grand Millennium Auckland

Located in the heart of the city, a stay at Grand Millennium Auckland places you within walking distance of some of the city's finest dining, shopping and entertainment venues.

Meals included: Breakfast



Day 3



Auckland to Paihia

The drive from Auckland to the Bay of Islands takes approximately 3.5 hours, but allow extra time to enjoy the sights along the way. Pause for a breath of fresh salty air in Whangarei, where you can explore scenic highlights like the Whangarei Falls or the lively Town Basin. Further along, take a break in Kawakawa known for its quirky, world-famous Hundertwasser Toilets. As you approach Paihia, the gateway to the Bay of Islands, soak in the stunning views of native bush and endless golden beaches that define this iconic Northland region.

Paihia, Bay of Islands

Paihia, an oceanside gem, played a pivotal role in Aotearoa-New Zealand's history. A visit to the Waitangi Treaty Grounds offers a profound look into the signing of the Waitangi Treaty, where 43 Māori chiefs and 39 Crown representatives shaped the nation's future. Beyond its rich history, Paihia is a haven for water-based activities. From sailing through the Hole in the Rock and dolphin spotting to kayaking or fishing, or perhaps a day relaxing on the beach, this picturesque coastal town is the perfect base to explore the stunning Bay of Islands.

Your accommodation: Copthorne Hotel and Resort Bay of Islands

Copthorne Hotel & Resort Bay of Islands is located within the Waitangi Treaty grounds, surrounded by native bush and the beautiful Bay of Islands Harbour.

Meals included: Breakfast



Day 4



Explore Bay of Islands

Commonly known as the 'winterless north'; New Zealand's Bay of Islands is made up of over 140 subtropical atolls. Renowned for its untouched beaches, abundant marine life, and idyllic climate, this tropical paradise ticks all the boxes. Spend some time on a remote stretch of beach, or see the dolphins on an ocean safari. If diving is your thing, take the morning to descend the Rainbow Warrior - The Greenpeace flagship sunk by French saboteurs in 1985. Wander around Russell, a whaling port founded in 1843. Learn about our culture in historic Waitangi, the site where The Treaty of Waitangi was signed in 1840 between the Māori and Europeans. Alternatively, you may like to take a day tour to Cape Reinga, the very top of the North Island.

Rosewood Kauri Cliffs Golf Course

Rosewood Kauri Cliffs was designed and built by David Harman. The par 72 championship golf course measures 7,119 yards / 6,510 metres and offers five sets of tees to challenge every skill level. Fifteen holes view the Pacific Ocean, six of which are played alongside cliffs which plunge to the sea. The beautiful inland holes wind through marsh, forest and farmland. Rosewood Kauri Cliffs is currently ranked #39 in the world by Golf Digest Top 100 Greatest Golf Courses in the World.

Rosewood Kauri Cliffs recently underwent a renovation from world-renowned golf course architect Rees Jones. The 5th hole received a complete redesign and was transformed from a long, uphill, forced carry par-3 to a short "drop shot" par-3. Other notable changes were the addition of tees on the 2nd and 9th holes and a bunker renovation on the 4th hole. The golf complex includes a world-class practice range, putting and chipping greens, a well-stocked golf shop, and ladies' and men's locker rooms. Premium ladies' and men's rental clubs are available.

Your accommodation: Copthorne Hotel and Resort Bay of Islands

Copthorne Hotel & Resort Bay of Islands is located within the Waitangi Treaty grounds, surrounded by native bush and the beautiful Bay of Islands Harbour.

Meals included: Breakfast



Day 5



Paihia, Bay of Islands to Auckland via Waipoua Forest

Today you will leave the Bay of Islands for a scenic return trip to Auckland. Head west, leaving the Pacific Ocean for the wilder seas of the Tasman and Hokianga. Go through the small townships of Omapere and Opononi, each with a great seaside feel.

Your route now goes south through Waipoua Forest, home to the largest and oldest Kauri trees in the country. Make sure you allow time for several of the signposted short walks as you pass - not to be missed is the five minute loop to view the largest of all the trees - Tane Mahuta. As you make your way back down the country you'll pass the Matakoho Kauri Museum with extensive displays on the region's logging, farming and social history. Continuing on, go through Warkworth and the bohemian settlement of Puhoi before crossing the harbour bridge to arrive in Auckland city.

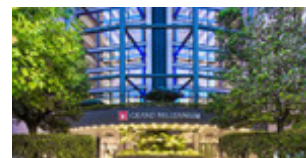
Auckland

Auckland, or Tāmaki Makaurau in Māori, is a city that effortlessly blends vibrant urban life with stunning natural beauty. Take a ferry to Waiheke Island for award-winning wineries, olive groves, and pristine beaches, or explore Devonport, a charming seaside suburb with historic streets and cafés; culture. Climb One Tree Hill or the volcanic Mt Eden for panoramic views of the city and harbour. Shop and dine in Ponsonby's stylish boutiques and eateries, or experience the eclectic energy of K Road, once a red-light district and now the world's sixth coolest street. Nature enthusiasts can wander the Auckland Botanic Gardens, hike the scenic Waitākere Ranges, or surf the rugged west coast beaches like Piha and Muriwai. Art lovers can visit the Auckland Art Gallery, while adventure seekers can sail the Waitematā Harbour or take in the city skyline from the iconic Sky Tower. With its mix of culture, cuisine, and outdoor escapes, Auckland promises unforgettable experiences for every traveller.

Your accommodation: Grand Millennium Auckland

Located in the heart of the city, a stay at Grand Millennium Auckland places you within walking distance of some of the city's finest dining, shopping and entertainment venues.

Meals included: Breakfast



Day 6



Auckland to Taupo

Heading south from Auckland you'll go through the lush pastures of Waikato king country. Choose to bypass Hamilton or if you've got the time, stop in to visit the renowned Hamilton Gardens - a detour we highly recommend. Continue on, following the Waikato River through the small township of Cambridge to eventually arrive in Taupo, which sits on New Zealand's largest lake - Lake Taupo - and is actually a giant volcanic caldera.

Explore Taupo

Nestled on the shores of New Zealand's largest lake, Taupō is a vibrant town surrounded by stunning volcanic landscapes and the peaks of Tongariro National Park, including Mt Ruapehu. The town buzzes with cafes, shops, and bars, while outdoor enthusiasts can choose from bungy jumping, skydiving, fishing, kayaking, sailing, horse riding, or hiking. Don't miss the quirky 'Arte Cafe and Gallery with its mosaic outdoor living room and iconic 'Alice's Chair'. Just outside town, explore the geothermal wonders of Craters of the Moon, the power of Huka Falls, or take a jet boat ride for an unforgettable view. Taupō perfectly blends natural beauty, thrilling adventures, and unique cultural experiences.

SUGGESTED ACTIVITY - Huka Falls Jet Boat Ride

The Huka Jet is 30 minutes of pure fun and exhilaration, skimming close to cliffs, sliding past trees, feeling the adrenalin of full 360 degree spins. The excitement continues right up to the base of the foaming Huka Falls, where you get a spectacular water level view to New Zealand's most visited natural attraction. Nothing compares to watching 220,000 litres per second tumbling over the cliff face towards you. The water from the mighty Huka Falls runs down the Waikato River through a series of Hydro Power Stations. You'll get a view of the Wairakei Geothermal Power Station in the comfort of a powerful Chevrolet V8 jet boat. This unique Geothermal Power Station uses underground geothermal activity to produce hot steamy water. The Waikato Rivers beautiful environment is varied and unique and is New Zealand's longest river flowing north from our largest lake, Lake Taupō. It is important you read and understand the risks associated with this activity. For more information please see here.

SUGGESTED ACTIVITY - Maori Rock Carving Cruise

Sit back and relax in luxury bean bags on board the yacht Barbary as you enjoy a scenic sail across Lake Taupo to the 10-metre high Maori rock art, only accessible by boat. You're guaranteed amazing photo opportunities as you experience one of life's postcard moments on this Maori tour. Glide across a smooth lake as you soak up the warming sun or go for a swim before you enjoy free light refreshments at the rock carvings. If you're looking for a little more activity you can help hoist the sails or take a turn at the wheel. Taupo's Maori rock carvings may look like the remains of a 1,000-year-old Maori village, but these rock carvings were created in the late 70s by local artists lead by John Randall. Duration of cruise is 2 to 2.5 hours.

Your accommodation: Millennium Hotel & Resort Manuels Taupo

Millennium Hotel & Resort Manuels Taupo enjoys a magnificent location right on the shores of Lake Taupo, New Zealand's largest lake.

Meals included: Breakfast



Day 7



Kinloch Golf Course

Ranked in 2013 in the Top 100 in the World by Golf Course Architecture Magazine, The Kinloch Club was also rated on opening in 2007 as the top new golf course outside North America by the prestigious US Travel and Leisure Golf Magazine. The Golden Bear visited Kinloch to oversee construction of his signature Championship golf course and returned to The Kinloch Club in February of 2008 to play the course for the first time since completion. Jack was extremely happy with how his vision had come to fruition and was greatly impressed with the maturity of the golf course after it's 'grow in' stage. The Kinloch Club (Nicklaus signature golf course) is the only Nicklaus designed golf course in New Zealand.

Your accommodation: Millennium Hotel & Resort Manuels Taupo

Millennium Hotel & Resort Manuels Taupo enjoys a magnificent location right on the shores of Lake Taupo, New Zealand's largest lake.

Meals included: Breakfast



Day 8



Taupō to Napier

The road from Taupō climbs the Ahimanawa Range before reaching the Pacific Coast north of Napier, a city famed for its 1930s Art Deco architecture, Mediterranean climate, and over 2,200 hours of sunshine a year. Known as the city by the sea, Napier boasts vibrant cafes, wineries, and local produce, with Marine Parade offering sweeping ocean views toward Cape Kidnappers, home to the world's largest mainland gannet colony. Bluff Hill provides panoramic views of the town, Westshore beaches, and the bustling Port of Napier. A full day can be spent exploring Ocean Spa hot pools, the Hawke's Bay Museum, and the National Aquarium. In 1931, a devastating magnitude 7.8 earthquake destroyed much of Napier and Hastings, killing 258 people. The subsequent rebuilding created the modern Art Deco city we see today, with the Ahuriri Lagoon raised over two metres to allow for future growth.

Napier City

Napier, a coastal gem, is famed for its 1930s Art Deco architecture, the annual Art Deco Weekend, stately Norfolk pines, nearby wineries, and fresh local produce. With a Mediterranean climate and over 2,200 hours of sunshine annually, it boasts a thriving cafe culture set against stunning heritage buildings. The city center has around 30 cafes within walking distance, while Ahuriri, just beyond Bluff Hill, offers more upscale dining. Marine Parade overlooks the Pacific Ocean and Cape Kidnappers, home to the world's largest mainland gannet colony. Visitors can explore Ocean Spa, the Hawke's Bay Museum, and the National Aquarium of New Zealand. Bluff Hill, a key landmark, provides sweeping views of Napier, Perfume Point, Westshore Beach, and the busy Port of Napier, which exports timber, fruit, and meat worldwide.

In 1931, Napier was devastated by a 7.8-magnitude earthquake, New Zealand's worst natural disaster. Fires ravaged the city. Rebuilding efforts transformed Napier and Hastings into modern cities, while the uplifted Ahuriri Lagoon created much-needed land for expansion.

Walking tracks in and around Hawkes Bay

Hawke's Bay offers a variety of scenic walks, from coastal paths to forest trails, perfect for exploring the region's natural beauty. Whether you're looking for a short stroll or a more challenging hike, there's something for everyone. Be sure to check with the Department of Conservation for current conditions before heading out.

Your accommodation: Art Deco Masonic Hotel

The Art Deco Masonic Hotel occupies a significant historic building on Napier's waterfront and has been richly refurbished in keeping with the Art Deco architecture. With its central location and decadent décor, this is the best place to experience what Napier is famous for.

Meals included: Breakfast



Day 9



Rosewood Cape Kidnappers Golf Course

Designed by legendary golf architect Tom Doak, the Rosewood Cape Kidnappers par 71 golf course measures 7,119 yards (6,510 meters) and will challenge golfers of all skill levels. Completed in 2004, our spectacular New Zealand golf course has been hailed as one of the great modern marvels in golf. Built on a ridge-and-valley landscape and with stunning sea views, Rosewood Cape Kidnappers Golf Course plays high above the ocean atop dramatic cliffs.

With cliff-edge fairways perched 140 metres above sea level and with a surface that remains firm and fast, this course offers holes unlike anything you find elsewhere in the world. While every hole has a spectacular view of the Bay, some play cautiously alongside deep ravines as others intimidate golfers with deep cliff top bunkers and sheer drops off the very edge of the earth. The golf complex includes a world-class practice range, putting and chipping greens, a well-stocked golf shop, clubhouse and ladies' and men's locker rooms. Premium ladies' and men's rental clubs are available.

SUGGESTED ACTIVITY - Hawkes Bay Twilight Odyssey Tour with Odyssey NZ - Dinner Included

Savour a progressive culinary journey through Hawke's Bay's vineyards. Start with a boutique wine tasting, absorb the awe-inspiring views from Te Mata Peak, indulge in a gourmet main at a top winery restaurant, and finish with a luxurious dessert at Mission Estate. Fine food, exceptional wine, and stunning scenery await!

Your accommodation: Art Deco Masonic Hotel

The Art Deco Masonic Hotel occupies a significant historic building on Napier's waterfront and has been richly refurbished in keeping with the Art Deco architecture. With its central location and decadent décor, this is the best place to experience what Napier is famous for.

Meals included: Breakfast



Day 10



Air New Zealand flight Napier to Christchurch

Collect Rental Car

This tour's from price includes an intermediate-sized vehicle, setting you up for comfortable travels. Yet, we understand every adventure is unique! Feel free to select the perfect wheels from our incredible collection of rental cars, spanning from economy hatchbacks to premium SUVs.

Explore Christchurch

Following earthquakes that razed its centre and much of the outlying suburbs, Ōtautahi-Christchurch is well into a billion-dollar makeover. In the middle of the Canterbury Plains, bordering the Pacific Ocean, New Zealand's newest city is an ideal gateway to exploring the middle of the South. Go punting on the Avon River, take a historic tram ride, catch the gondola to the rim of an extinct volcano or do all three! See the world's only Cardboard Cathedral and for nature enthusiasts - wander the renowned Christchurch Botanic Gardens, or head to Oxford Terrace in the city to find a great spot to eat or drink. Drive an hour in any direction to ski, mountain bike, wine taste, whale-watch, bungee jump or play golf. Take the winding Port Hills road to the French settlement of Akaroa & Banks Peninsula and tour the vines in Waipara for an authentic New Zealand wine-tasting experience.

Your accommodation: Peppers Clearwater Resort

Peppers Clearwater Resort is a waterfront property set within beautiful grounds overlooking the clear, shimmering Lake Kaikainui. All rooms offer either lake views or views of the championship fairways.

Meals included: Breakfast



Day 11



A second day to explore Christchurch City and surrounds

A relaxing way to spend your second day in Christchurch is with a day trip to the village of Akaroa or the wine growing region of Waipara. The historic French settlement of Akaroa sits on a picturesque harbour and is a beautiful place to relax, soak in its history and play in the harbour. Two of the most popular activities are the Akaroa Harbour nature cruise or swimming with the rare Hector's dolphin. If you prefer fresh mountain air and an adrenalin rush, Christchurch is a great base to explore the Southern Alps. Enjoy an early morning hot air balloon ride, or a full day Alpine Safari, with jet boating, a 4WD farm tour and the spectacular TranzAlpine Scenic Train journey included.

Clearwater Golf Course - suggested activity

The par 72 championship course is home to the HSBC NZ PGA Championship. Designed by John Darby in consultation with New Zealand golfing legend, Sir Bob Charles, the course combines elements of links golf inspired by the great Scottish courses with parkland golf, more reminiscent of Florida. Playable year-round, the course meanders around a succession of spring-fed lakes and trout-filled streams, with uninterrupted views of the spectacular Southern Alps. There are five tee positions to suit players of all abilities. To book, please organise with Clearwater Golf directly here.

Your accommodation: Peppers Clearwater Resort

Peppers Clearwater Resort is a waterfront property set within beautiful grounds overlooking the clear, shimmering Lake Kaikainui. All rooms offer either lake views or views of the championship fairways.

Meals included: Breakfast



Day 12



Christchurch to Aoraki-Mt Cook National Park

Drive through the heart of the South Island, crossing the vast Canterbury plains. Catch your breath in Geraldine before continuing through Fairlie. Ascending Burkes pass you'll come to the picturesque town of Lake Tekapo. Follow the road and take in the view of Aoraki-Mt Cook (New Zealand's tallest mountain) from the shores of Lake Pukaki, known for its glacier fed turquoise blue colour. Continue along the lake to your final destination Aoraki-Mt Cook Village.

Aoraki-Mt Cook National Park

At 3754m Aoraki-Mt Cook is Aotearoa-New Zealand's highest mountain, located deep in the heart of the Southern Alps. As well as its impressive beauty, Aoraki-Mt Cook National Park is also home to a huge range of awe-inspiring sights and activities. Take to the air with Mt Cook Ski Planes for a scenic flight that includes a glacier landing. At around 27 kilometres long the Tasman Glacier is New Zealand's longest and a Glacier Explorers tour allows you to see its unique features up close.

There are many short hikes in and around the park and these are well signposted around the village. Those with an interest in the night sky should take a Big Sky Stargazing tour with the Hermitage Hotel. The region is considered to have one of the clearest night skies in the world and is one of the few gold-rated dark sky reserves worldwide.

Visit the Sir Edmund Hillary Alpine Centre for insight into this region's mountain climbing history. You'll also learn of Sir Ed's incredible achievements and his dedication to helping others around the world.

Glacier Explorers

Experience 500-year-old icebergs up close on the Aoraki-Mt Cook terminal lake. The Glacier Explorers tour is the only one of its kind in New Zealand and one of only three in the world! Very few glaciers terminate into lakes and even fewer of them are accessible. See towering ice cliffs and floating icebergs from the safety of a specially designed boat. These boats provide a safe way to view unseen and inaccessible areas of New Zealand's largest glacier The Tasman.

Your accommodation: Hermitage Hotel, Aoraki Wing Premium

The Hermitage Hotel ringed by magnificent snow-capped peaks of the Southern Alps, is a world-renowned tourist destination and has been an icon of superior accommodation and dining since 1884.

Meals included: Breakfast



Day 13



Aoraki Mt Cook National Park to Queenstown

Leaving the alpine region of Aoraki Mt Cook, you'll travel through the lakeside town of Twizel, then a little further to Omarama the gliding capital of New Zealand. Continue on over the Lindis Pass, one of New Zealand's highest roads with a summit of 971 metres. Arrive in the quaint village of Tarras, then continue on a short way to the historic Bendigo Reserve, one of Otago's original gold mining settlements. Follow the road to Cromwell, and keep going through the sheer cliffs of the Kawarau Gorge towards Gibbston, one of New Zealand's premier wine growing regions. See the historic Kawarau Bridge where you can bungy jump or relax and watch others take the plunge. Approaching Queenstown, the Remarkables mountain range comes into view as you arrive into the adventure capital of New Zealand.

Queenstown

Queenstown known in Māori as Tāhuna, is home to many adrenaline-inducing activities. Nestled on the shores of Lake Wakatipu, this alpine town has very distinct seasons, and most adrenaline-filled activities can be accessed year-round. Queenstown is home to jet boating, bungy jumping, rafting, skydiving, paragliding, and even indoor thrills. If you want that rush - head out on the Shotover Jet, dive off the Nevis Bungy, freefall on the Canyon Swing, or Zip line the Gondola. While arguably the brightest gem in New Zealand's crown, Queenstown offers far more than an action-packed getaway. If you're looking for a slightly slower pace, there are plenty of recreational activities, including hiking and biking trails to explore, guided tours, boat cruises, scenic flights, or spa and wellness options to help you get away. Head to the lakefront, eat at one of the al fresco eateries, and soak up the local vibes; catch a ride on the iconic 100-year-old steamship the TSS Earnslaw; or take the Skyline Gondola and enjoy bird's-eye views of the Remarkables mountain ranges and Lake Wakatipu. Pack a picnic and go for a hike, only 20 minutes from Central Queenstown, Coronet Peak opens for summer sightseeing. You can ride the Peak Gondola to the top for panoramic views and hike the trails, or go for a bike ride on many excellent biking trails. In winter, Queenstown becomes a world-class winter resort, with four ski areas and a range of activities, bars, restaurants, and ways to relax and unwind.

TSS Earnslaw Cruise and Walter Peak Gourmet BBQ Dinner

Enjoy a quintessential Kiwi experience, a delicious gourmet BBQ buffet meal, and a farm demonstration in a stunning lakeside setting. Take in the stunning views of Lake Wakatipu and its surroundings as you cruise across the lake to the historic Walter Peak high country farm aboard the TSS Earnslaw Steamship. Enjoy the ambiance of the heart of the stately homestead while your Colonel's Homestead Restaurant chef prepares a gourmet BBQ dinner. Your seasonal menu includes an extensive selection of local New Zealand produce, including succulent meats and a selection of delicious vegetables and salads. Complete your meal with your choice of delicious desserts, or New Zealand cheeses. After dinner, watch the farm dogs in action with a sheep-herding demonstration and say hello to the other farm animals. Finally, cruise home under the southern stars and enjoy the fresh night air as the lights of Queenstown draw ever closer.

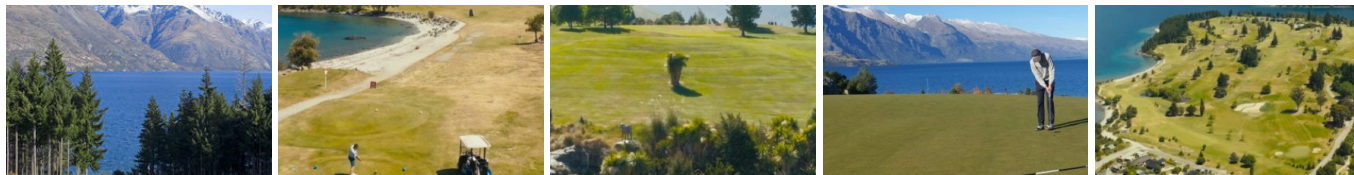
Your accommodation: Kamana Lakehouse

As the highest situated hotel in Queenstown only 3kms from downtown, immerse yourselves in sweeping views of Lake Wakatipu and The Remarkables mountain range, while enjoying an exclusive stay in New Zealand's "adventure capital".

Meals included: Breakfast, Speciality Dinner



Day 14



Queenstown golf course

Queenstown Golf Course describes itself as one of the most picturesque in the country. Just a few minutes drive from the centre of Queenstown the course sits on a peninsular surrounded on 3 sides by Lake Wakatipu. This 18 hole Par 72 course is 6103 metres from the back tees. See [here](http://www.queenstowngolf.co.nz) for much more detail - www.queenstowngolf.co.nz

Queenstown Skyline Gondola Ride

Hop aboard the Skyline Gondola - the steepest cable car lift in the Southern Hemisphere! From which you can take in the awe-inspiring views of this spectacular landscape. Sit back and relax as you enjoy panoramic views of The Remarkables, Walter Peak, Cecil Peak, Coronet Peak and the magnificent Lake Wakatipu.

Your accommodation: Kamana Lakehouse

As the highest situated hotel in Queenstown only 3kms from downtown, immerse yourselves in sweeping views of Lake Wakatipu and The Remarkables mountain range, while enjoying an exclusive stay in New Zealand's "adventure capital".

Meals included: Breakfast



Day 15



Explore Queenstown

Well-known as New Zealand's "adventure capital", Queenstown is home to a range of adventures, from the world's first and most famous bungy jumps to jet boat thrills, white-water rafting, and skydiving. However, Queenstown offers far more than a fast-paced, action-packed holiday. Settled on the shores of beautiful Lake Wakatipu beneath a soaring panorama of the Remarkables Mountain Range, this alpine town is surrounded by many historic, gastronomic, and scenic wonders. Take a stroll through the beautiful lakefront parks and gardens, browse through market stalls on weekends, dine in wonderful al-fresco restaurants, or ride on the 100-year-old historic Steamship - TSS Earnslaw to Walter Peak Station. Take the Queenstown Gondola up to Bob's Peak and soak up the panoramic views of the magnificent lake and mountain ranges. And after all of that, if you do want the adrenaline rush, Queenstown is known for taking your pick from the Shotover Jet, Canyon Swing, Zipline, Luge, or Heli-hike.

Over The Top Golf Fly-Drive-Putt

For the ultimate golf experience you can't go past a hole in one at 4,500 feet! From Queenstown take a scenic helicopter flight with Over The Top helicopters to the most spectacular golf range in the world. Landing at 4500 feet on top of the Southern Alps you'll find a unique par 3 golf experience with magnificent views of Queenstown and the surrounding mountains. You'll choose two T's from the four onsite for your own golfing adventure. The challenge includes nearest to pin, longest putt and longest drive and for maximum bragging rights - a hole in one. You'll have 5 balls and 1.5 hours so take your best shot!

SUGGESTED ACTIVITY - Shotover Jet Canyon Jet Boat Ride

Shotover Jet is the only company permitted to operate in the Shotover River Canyons. It's a thrilling ride! Skim past rocky outcrops at close range in your Shotover Jet 'Big Red', as you twist and turn through the narrow canyons at breathtaking speeds. And a major highlight - hold tight for the world-famous Shotover Jet full 360-degree spins! It is important you read and understand the risks associated with this activity. For more information please see here.

SUGGESTED ACTIVITY - Time Tripper Cinematic Experience

Queenstown's only underwater experience takes you on a journey through time and legend beginning many millions of years ago. Your time travel pilot will guide you back 90 million years, through the time of the dinosaurs, take you to when New Zealand was formed, fly you deep into the earth when the Southern Alps were created and through the glacier that carved out Lake Wakatipu. Ending in present-day Queenstown, you then experience adventure activities you can do – all from the comfort of your rumbling seat!

You then experience 10 – 15 minutes of underwater viewing where you can feed the famous diving ducks, slinky eels and rainbow & amp; brown trout that lie beneath.

SUGGESTED ACTIVITY - The Original Onsen Evening Session

Enjoy the most memorable experience in Queenstown and surround yourself with a sky of stars and 14 Japanese lanterns as you soak up the warm waters of the Onsen Hot Pools. Nestled high into a cliff-side overlooking the magnificent Shotover River canyon, the experience is all about unwinding and soaking-up Queenstown's spectacular scenery, enjoying the pure waters and the fresh mountain air as your mind and body surrenders to the deep penetrating warmth and gentle massage of the private pools. Water temperature is set according to the day - generally between 37.8C on a hot day, to 39.8C during a snow-storm and in the summer one of the pools is kept cold for those who relish the thought of a cold plunge!

Your accommodation: Kamana Lakehouse

As the highest situated hotel in Queenstown only 3kms from downtown, immerse yourselves in sweeping views of Lake Wakatipu and The Remarkables mountain range, while enjoying an exclusive stay in New Zealand's "adventure capital".

Meals included: Breakfast



Day 16



Millbrook Golf Course

Nestled in the heart of Queenstown's awe-inspiring alpine scenery, Millbrook Golf Course delivers an extraordinary golfing experience. Spanning 650 acres of rolling greens, water features, and majestic landscapes, it features two distinct 18-hole championship courses: the Remarkables 18 and the Coronet 18. Renowned for its fast, true greens and superb turf quality, the Remarkables 18 offers an inspiring challenge amid its stunning surroundings. Meanwhile, the Coronet 18 sets a new benchmark for golfing excellence, seamlessly integrating into the natural terrain for an unforgettable experience. With meticulously maintained fairways, premium facilities, expert coaching, a well-stocked pro shop, and luxurious dining at the clubhouse, Millbrook offers more than just golf.

Your accommodation: Kamana Lakehouse

As the highest situated hotel in Queenstown only 3kms from downtown, immerse yourselves in sweeping views of Lake Wakatipu and The Remarkables mountain range, while enjoying an exclusive stay in New Zealand's "adventure capital".

Meals included: Breakfast



Day 17



Return your vehicle to Queenstown Airport

Explore more of Queenstown before dropping your rental car at the airport depot and continuing your onward journey.

Farewell from Aotearoa / New Zealand

Bid farewell to Aotearoa / New Zealand, taking with you unforgettable memories of its breathtaking landscapes and incredible adventures. In Māori, it is said mā te wā, which is not goodbye, it is see you soon!

Tour details

Departures:	Daily
Tour type:	Nationwide Self Drive
Starts:	Auckland
Finishes:	Queenstown
Tour length:	17
Accommodation:	Hotel 4 star
Car/transport type:	

Accommodation summary

Day 1	Grand Millennium Auckland
Day 2	Grand Millennium Auckland
Day 3	Copthorne Hotel and Resort Bay of Islands
Day 4	Copthorne Hotel and Resort Bay of Islands
Day 5	Grand Millennium Auckland
Day 6	Millennium Hotel & Resort Manuels Taupo
Day 7	Millennium Hotel & Resort Manuels Taupo
Day 8	Art Deco Masonic Hotel
Day 9	Art Deco Masonic Hotel
Day 10	Peppers Clearwater Resort
Day 11	Peppers Clearwater Resort
Day 12	Hermitage Hotel, Aoraki Wing Premium
Day 13	Kamana Lakehouse
Day 14	Kamana Lakehouse
Day 15	Kamana Lakehouse
Day 16	Kamana Lakehouse