

## 6 day Southern Express

Experience Dunedin, Queenstown, Milford Sound and the Glaciers on this 6 day itinerary. Includes a trip to Milford Sound day tour including a 2 1/2 hour nature cruise and the famous Tranz Alpine train.

Starts in: Christchurch  
Finishes in: Christchurch  
Length: 6days / 5nights  
Accommodation: Motels  
Can be customised: Yes

This itinerary can be customised to suit you perfectly. We can add more days, remove days, change accommodations, mix it up, add activities to suit your interests or simply design and create something from scratch. Call us today to get your custom New Zealand itinerary underway.



### Inclusions:

Includes: All coach transport  
Includes: Afterhours emergency support while touring  
Included activity: Dunedin Coach Stop to Accommodation Transfer with Iconic  
Included activity: Dunedin to Queenstown by InterCity Coach  
Included activity: Milford Sound Cruise and Coach Tour from Queenstown with RealNZ - Lunch Included  
Included activity: Glacier Valley Shuttle

Included activity: TranzAlpine Scenic Train: Greymouth to Christchurch

Includes: All pick ups/drop offs at destinations

Included activity: Christchurch to Dunedin by InterCity Coach

Included activity: Dunedin Accommodation to Coach Stop Transfer with Iconic

Included activity: Taxi Transfer from Intercity Coach Stop to Queenstown Accommodation

Included activity: Queenstown to Franz Josef with Glacier Shuttles

Included activity: Franz Josef to Greymouth Train Station with Hokitika Scenic Tours

: 1 lunch

## Day 1



### Christchurch to Dunedin by InterCity Coach

Leaving Christchurch early, you will cross the vast Canterbury Plains as you head South, crossing many braided rivers that start their life as glacial melt water high in the Southern Alps. New Zealand's longest bridge at Rakaia crosses such an example. Pass through the towns of Timaru followed by Oamaru, most famous for its buildings constructed with the unique locally quarried white stone. Continue along the coast and into the city of Dunedin.

---

### Dunedin Coach Stop to Accommodation Transfer with Iconic

On arrival into Dunedin you will be met from your coach and transferred to your accommodation.

---

### SUGGESTED ACTIVITY - Wildlife Peninsula Encounter Standard Tour with Monarch

Join a local guide for a journey across the Otago Peninsula on this small-group tour of Dunedin. Travel over the high road with postcard views of the harbour and coast. You'll travel past quaint communities and rural farms. Spot wading birds as your mini-bus explores around the inlets and the wetland eco-systems. Your tour will visit a remote Otago Peninsula beach. A short walk from the mini-bus will provide dramatic views of rugged coastal cliffs, offshore islands and perhaps some huge sea lions. The trip continues to Taiaroa Head, home to the Royal Albatross Centre. Time is allowed to go inside and check out the displays. Take a walk down to Pilots Beach and see fur seals hauled out on the rocks, or walk out to the clifftop viewpoint, you might spot a royal albatross gliding past. Food & drink can be purchased here from the Albatross Cafe. Guests are also welcome to bring a pre-packed meal on tour with them. We recommend having a good-sized lunch before the tour departs Dunedin.

The final stop is at a Yellow-eyed Penguin conservation reserve. Visit the on-site rehab centre before a tour of the reserve. You'll take trails through native bushland, walking through tunnels and trenches to different viewing hides scattered around the reserve. Watch as the world's rarest penguin returns ashore and interacts around their nesting sites. The tour ends with a relaxed drive, following the harbour, back to Dunedin.

---

### SUGGESTED ACTIVITY - Speights Brewery Tour

Founded in 1876, the Speights Brewery still occupies its original Dunedin site - with several of its buildings dating back to the late 1800's. One of the only remaining 'gravity breweries' in the world, this 60-minute tour explains its inner workings. There is an opportunity to taste six different beers as well as bottle, cap and brew your own personal Speights Gold Medal Ale - the brewery's flagship beer.

---

### Your accommodation: Motel on York

Motel on York is located in the heart of Dunedin city. The property offers superior accommodation only 300 metres away from cafes and restaurants.



---

## Day 2



### Dunedin Accommodation to Coach Stop Transfer with Iconic

You will be collected from your accommodation and transferred to the coach stop in time for your departure.

## Dunedin to Queenstown by InterCity Coach

Your coach trip today takes you through the Otago Goldfields of yesteryear. The townships of Lawrence, Roxburgh and Alexandra were once booming gold rush towns, with populations many times more than their current small-town image would imply. More recently, Alexandra and Roxburgh have become well known for the delicious stone fruit grown here. The road follows the South Island's longest river, the Clutha River, and at Clyde, you will see one of the largest hydropower stations harnessing its energy. The Kawarau River carves a steep and rugged gorge through to Gibbston where some of the finest Pinot Noirs can be sampled. It's also the home of the world's first commercial bungy jumping operation at the historic Kawarau Suspension Bridge and a great viewing platform. Continuing through Lake Hayes you soon arrive into the bustling alpine adventure town of Queenstown.

## Taxi Transfer from Intercity Coach Stop to Queenstown Accommodation

Today you will be met by a Blue Bubble taxi on your arrival at the Intercity stop and be taken to your accommodation.

### Your accommodation: Blue Peaks Lodge

Blue Peaks Lodge offers well equipped self contained rooms with a fantastic location overlooking Queenstown and is just an easy five minutes walk to the Queenstown lakefront.



## Day 3



### Milford Sound Cruise and Coach Tour from Queenstown with RealNZ - Lunch Included

Departing from Queenstown sit back and relax aboard a luxury glass-roofed coach to enjoy a relaxing trip along the shores of Lake Wakatipu and through the rolling countryside to Te Anau. The coach driver provides an informative commentary and plenty of photo opportunities. After a morning tea break in Te Anau, the coach continues along the spectacular Milford Road. On reaching Piopiotahi-Milford Sound, board your vessel for a leisurely cruise in the fiord. The cruise provides excellent viewing opportunities and plenty of time is available to enjoy waterfalls, rainforests, mountains and wildlife. Rain or shine, every day in Piopiotahi-Milford Sound will leave you in awe.

### Your accommodation: Blue Peaks Lodge

Blue Peaks Lodge offers well equipped self contained rooms with a fantastic location overlooking Queenstown and is just an easy five minutes walk to the Queenstown lakefront.

Meals included: Lunch



## Day 4



### Explore Queenstown

Queenstown, known in Māori as Tāhuna is celebrated as New Zealand's 'adventure capital'. Though Queenstown offers far more than a fast-paced, action-packed holiday. Settled on the shores of Lake Wakatipu beneath a soaring panorama of the Remarkables Mountain Range, this alpine town is surrounded by a plethora of historic, gastronomic, and scenic wonders. Whether you are looking for a scenic short walk or a longer one, you will find the perfect hike or bike trail in Queenstown. Explore Queenstown Gardens, or try out more challenging trails up to Ben Lomond Walkaway or Queenstown Hill Walking Track. Enjoy iconic views and take Queenstown Gondola up 450 metres to Bob's Peak, or ride on the 100-year-old Steamship - the TSS Earnslaw - to Walter Peak Station for dinner and a farm tour. Browse the waterfront cafes and al fresco restaurants, try out the famous Fergburger, or grab a dessert at Patagonia Chocolates.



## SUGGESTED ACTIVITY - Shotover Jet Canyon Jet Boat Ride

Shotover Jet is the only company permitted to operate in the Shotover River Canyons. It's a thrilling ride! Skim past rocky outcrops at close range in your Shotover Jet 'Big Red', as you twist and turn through the narrow canyons at breathtaking speeds. And a major highlight - hold tight for the world-famous Shotover Jet full 360-degree spins!

---

## SUGGESTED ACTIVITY - TSS Earnslaw Cruise and Walter Peak Gourmet BBQ Dinner

Enjoy a quintessential Kiwi experience, a delicious gourmet BBQ buffet meal, and a farm demonstration in a stunning lakeside setting. Take in the stunning views of Lake Wakatipu and its surroundings as you cruise across the lake to the historic Walter Peak high country farm aboard the TSS Earnslaw Steamship. Enjoy the ambiance of the heart of the stately homestead while your Colonel's Homestead Restaurant chef prepares a gourmet BBQ dinner. Your seasonal menu includes an extensive selection of local New Zealand produce, including succulent meats and a selection of delicious vegetables and salads. Complete your meal with your choice of delicious desserts, or New Zealand cheeses. After dinner, watch the farm dogs in action with a sheep-herding demonstration and say hello to the other farm animals. Finally, cruise home under the southern stars and enjoy the fresh night air as the lights of Queenstown draw ever closer.

---

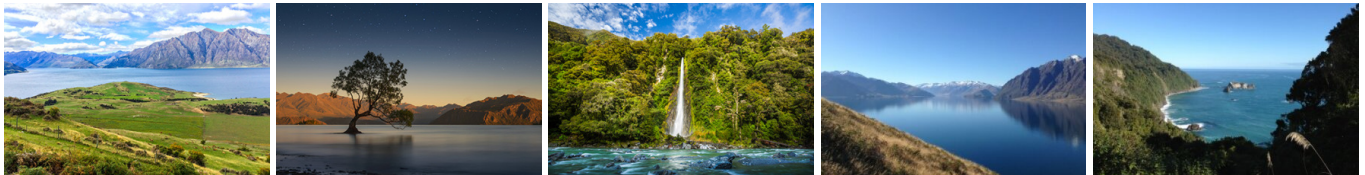
### Your accommodation: Blue Peaks Lodge

Blue Peaks Lodge offers well equipped self contained rooms with a fantastic location overlooking Queenstown and is just an easy five minutes walk to the Queenstown lakefront.



---

## Day 5



### Queenstown to Franz Josef with Glacier Shuttles

Leaving Queenstown, travel past picturesque scenery of massive mountain peaks and crystal-clear blue lakes. Journey across the Haast Pass to the other side of the Southern Alps, the landscape changes dramatically. Enter the wild and wonderful West Coast, a remote and unspoiled region. Wind your way past native rainforest, rocky coastlines and powerful waterfalls. Your journey concludes in the village of Franz Josef, your next base for exploration.&nbsp;

---

### Glacier Valley Shuttle

You'll be transferred up the Franz Josef Valley to the road end, where you'll have the opportunity to walk to a viewing platform with views of the glacier. Alternatively, you can enjoy one of the other scenic short walks in the area.

---

### Your accommodation: Punga Grove Motel & Suites

Punga Grove is right in the heart of Franz Josef Glacier village stylish accommodation in a beautiful rainforest setting.



---

## Day 6



### Franz Josef to Greymouth Train Station with Hokitika Scenic Tours

Head north from Franz Josef through to the historic gold mining region of Hokitika. Known for its Pounamu (New Zealand Greenstone) this seaside town has a rich history dating back to the 1860's. Continue on to Greymouth, the largest town on the West Coast and the starting point for the next leg of your journey - the TransAlpine Scenic Train.

---

## TranzAlpine Scenic Train: Greymouth to Christchurch

Considered one of the world's great train journeys, the TranzAlpine Scenic Train takes you from Greymouth to Christchurch. Travel across the South Island from the west to the east coast through Arthur's Pass National Park. From the comfort of your carriage see lush beech forest, deep river valleys and the spectacular peaks of the Southern Alps. Descend to the windswept Canterbury Plains before arriving in the city of Christchurch.

---

## Tour details

Departures:	Daily
Tour type:	Independant Bus & Coach
Starts:	Christchurch
Finishes:	Christchurch
Tour length:	6
Accommodation:	Motels
Car/transport type:	

---

## Included activities

Includes	All coach tour transport as specified in this tour package
Includes	TranzAlpine Train from Greymouth to Christchurch

---

## Accommodation summary

Day 1	Motel on York
Day 2	Blue Peaks Lodge
Day 3	Blue Peaks Lodge
Day 4	Blue Peaks Lodge
Day 5	Punga Grove Motel & Suites